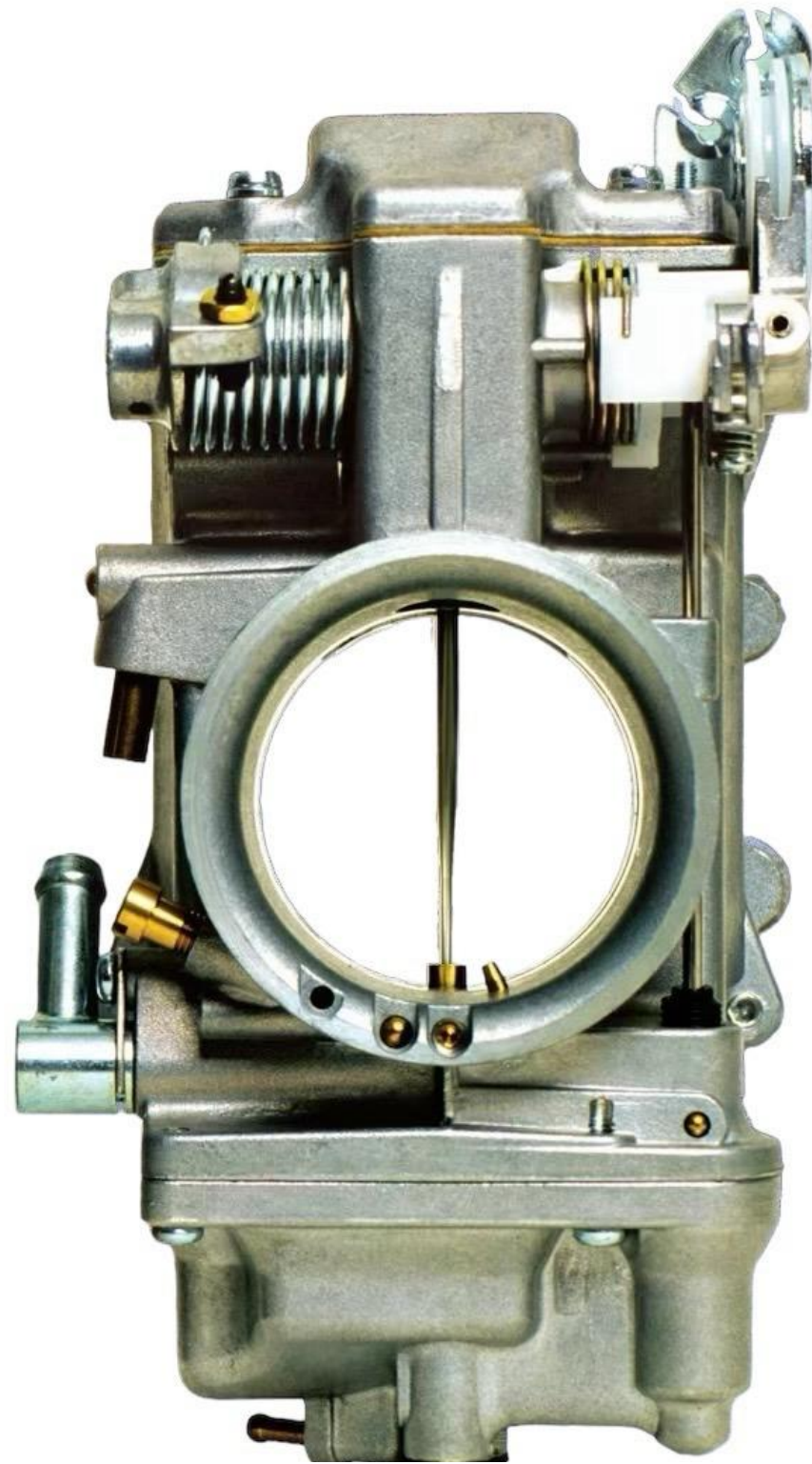


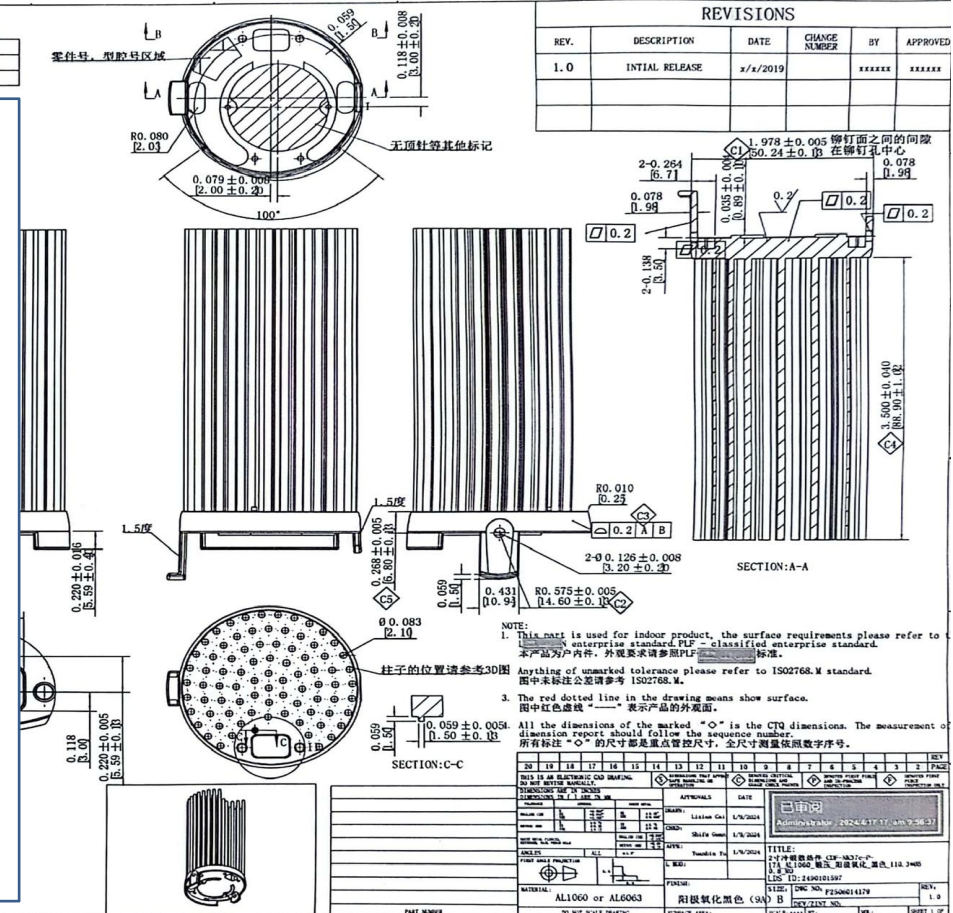


# Parts



*ZX's state-of-the-art Piston pin  
Pioneering development since  
1980*

*The piston pin is a part that connects the "piston" and the "connecting rod". To reduce weight, it has a hollow structure and is surface-hardened using chrome alloy steel, ensuring light weight, strength, and wear resistance. Recently, there has been an increase in products coated with DLC (Diamond Like Carbon) film to improve low friction and seizure resistance.*



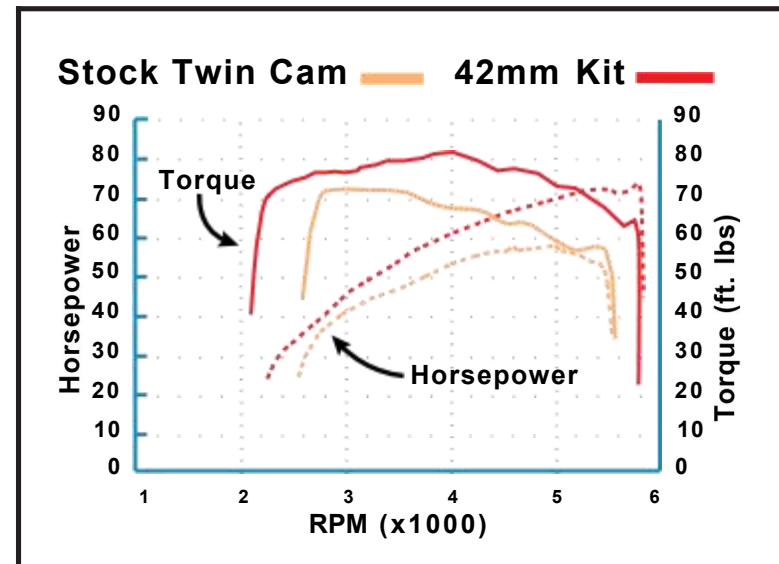
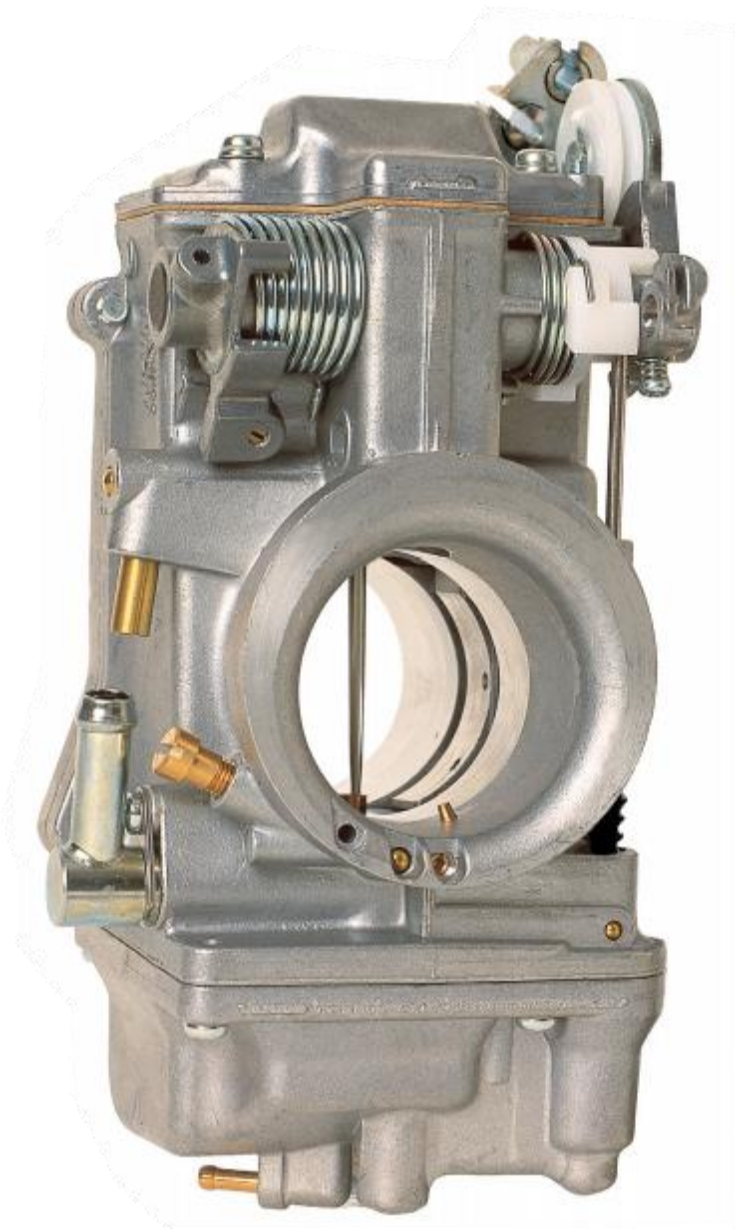
PERFORMANCE STARTS HERE



# Flat-Slide Carbs

## 42/45/48 Smoothbore Carburetors

*Available in 42, 45, and 48mm throttle bores for use with stock, mild, and highly modified engines.*



# ZXR Kits

## 42/45/48 Smoothbore Kits

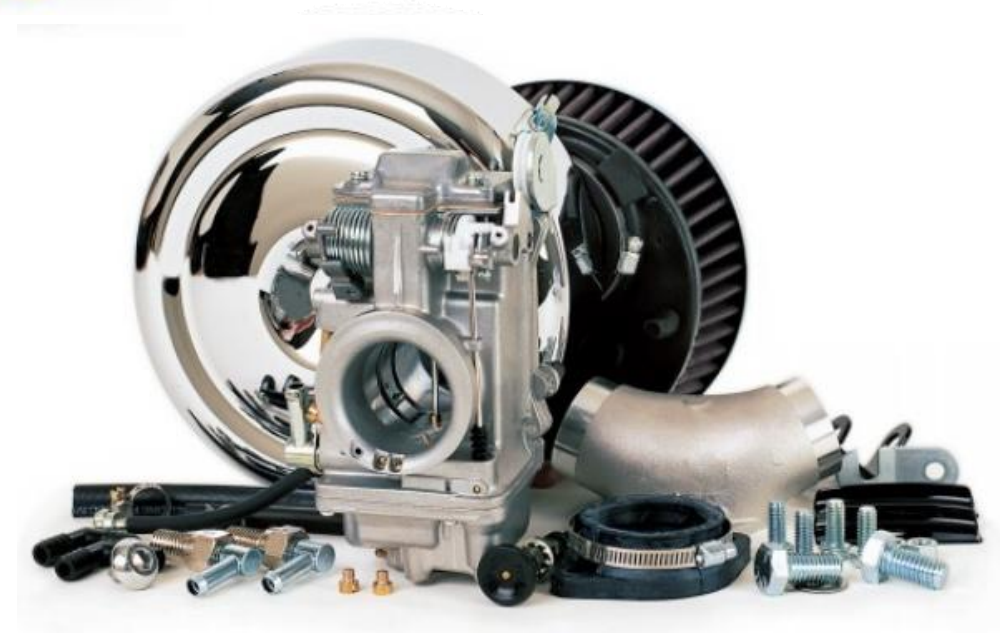
Every ZHONGXING Carburetor Kit is an easy bolt-on application. Each flat-slide carburetor in the kit comes pre-jetted and ready to run!

◀ **Easy Kits 42/45mm**

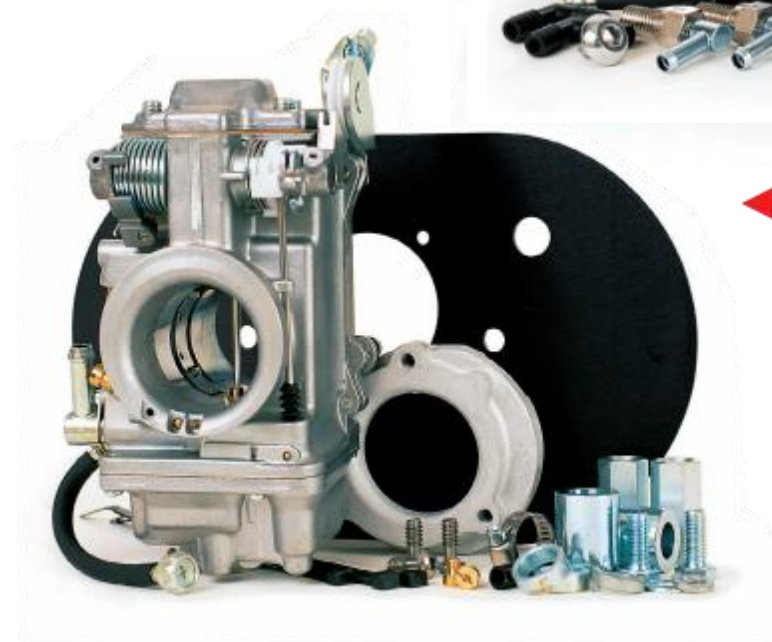
**Race Kits 48mm**



**Total Kits ▶  
42/45mm**



◀ **Sportster / Buell Kits**



# ZXR Applications



## Race Kit 48mm for Big Motors

Designed for the serious race engine builder and extreme street motor enthusiast looking for more power. Recommended for 120ci engines or bigger with high flow heads and cams. Kits include a 48mm smoothbore carb, rubber mounting flange (78mm bolt hole centers), choke cable, four main jets. Builder supplies manifold and appropriate air filter or velocity stack.

## ZHONGXING ZXR Series Carburetor Kits

The latest 42/45/48mm smoothbore carburetors from ZHONGXING offer quick installation and excellent throttle response. The smoothbore design maximizes engine power, ensuring confident acceleration and passing. They provide good gas mileage and long-lasting, reliable performance. These kits are versatile, covering more models with fewer part numbers and include instructions and hardware for each application.



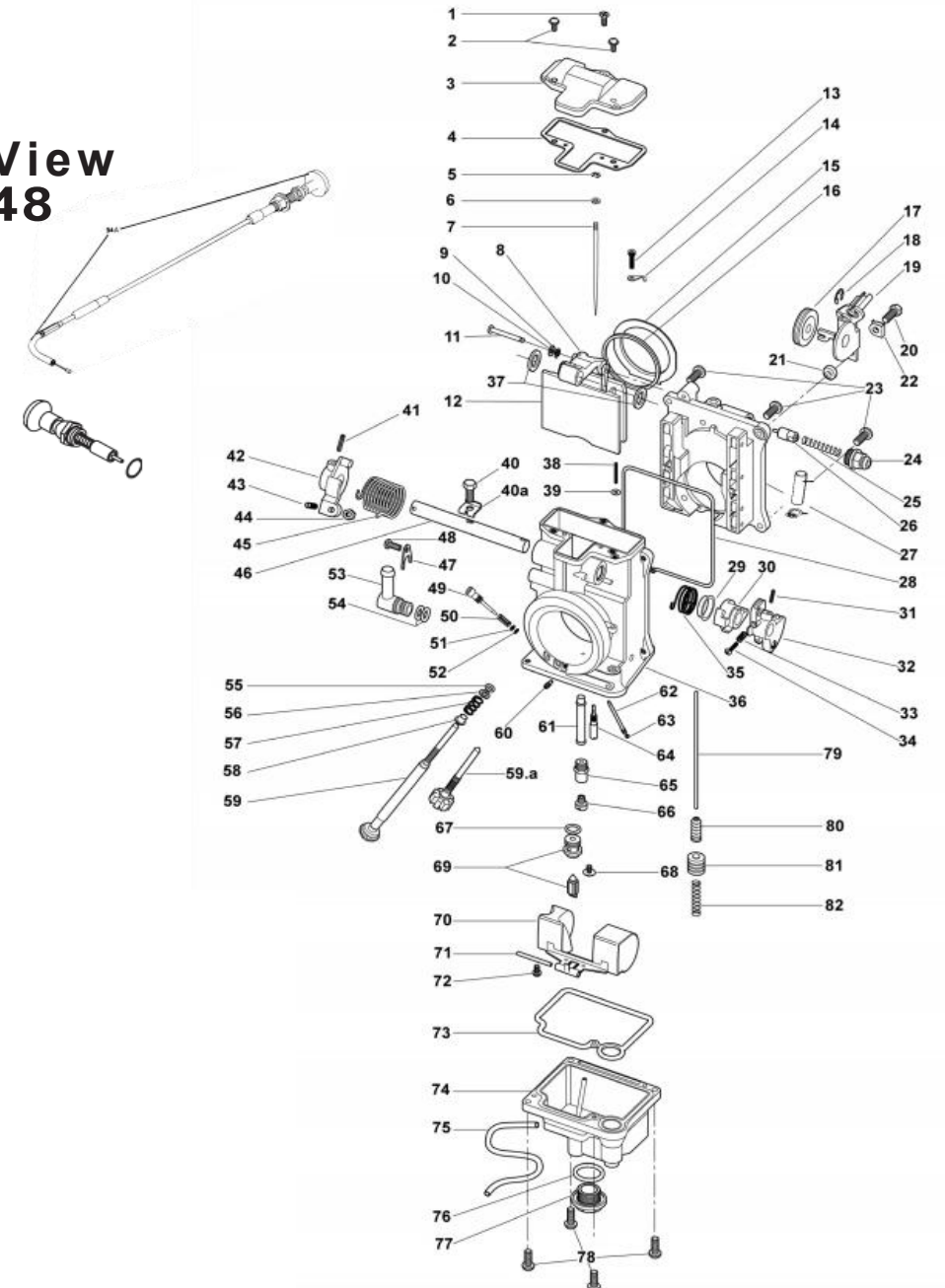
# Parts



## Individual ZXR42/45 Carburetors

For performance engine builders needing a carburetor for specific custom applications, these are available in standard aluminum or polished finishes.

## Exploded View ZXR42/45/48

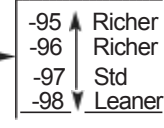


# ZXR Replacement

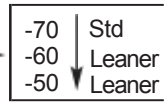
# Parts

## ZXR42/45/48 Parts List

#	PART NO.	DESCRIPTION
1.	C6=0411-B	Screw, Top Cover (HSR42/45)
1a.	KZS-028/05	Screw, Top Cover (HSR48)
2.	CX2=0414-B	Screw, Top Cover (HSR42/45/48)
3.	777-39005	Top Cover (42/45)
3a.	HR42/081	Top Cover (HSR48)
4.	TR42/04	Gasket, Top Cover
5.	BI32/126	E-Ring, Jet Needle
6.	836-03002	Washer, Jet Needle
7.	18-8DDX00-97	Jet Needle (42)
7a.	18-8CFX01-97	Jet Needle (45)
7b.	18-8CFX16-97	Jet Needle (48)
8.	TR42/03	Lever, T.V. (42/45)
8a.	TR42/08-1A	Lever, T.V. (HSR48)
9.	C40I/56	E-Ring, Link Lever
10.	C40I/10	Packing, Link Lever
11.	734-23041	Pin, Link Lever
12.	TR42/08-3.0	Throttle Valve (Slide)
13.	739-13001	Screw, Needle Retainer
14.	TR42/16	Clip, Needle Retainer
15.	TR42/13	Sealing Ring, T.V. (42/45)
15a.	TR48/04	Sealing Ring, T.V. (48)
16.	<b>TR42/10</b>	<b>Seal, Throttle Valve</b>
17.	935-98006	Pulley, Cable Bracket
18.	54974	E-Ring, Cable Bracket
19.	TR42/51	Bracket Assiy, Cable
19a.	TR42/53	Bracket Assiy, Sportster
20.	B4=0520-B	Bolt, Bracket
21.	VR28/204	Spacer, Bracket
22.	TV<42/38	Plate, Lock Tab
23.	X2=0514-B	Screw
24.	740-12001	Starter Nut, Choke
25.	VR14/241	Spring, Starter Plunger
26.	N199.192	Starter Plunger
27.	TR42/06-	Body (HSR42/45)
27a.	TR48/02-	Body (HSR48)
28.	626-94229	Seal, Spigot Body
29.	955-19021	Ring (Steel)
30.	TY42/43	Lever, A/P
31.	M238.019	Pin, Throttle Lever
32.	TC42/48	Lever, Throttle
33.	C12F/46-BB	Spring, A/P
34.	CC-0316-B	Screw, A/P
35.	TR42/47	Spring, A/P
36.	TR42SS1/01-0	Mixing Body (42/45)
36a.	TR48SS1/01-	Mixing Body (48)
37.	X36/95	Packing, Shaft (Plastic)
38.	TY42/36	Adjusting Screw, A/P
39.	C30/205	O-Ring, A/P Screw
40.	TR40/89	Bolt
40a.	TR42/17	Plate, Lock Tab for Shaft
41.	BM38/43	Pin, Return Lever
42.	TM42/46	Lever, Return
43.	V30/1069	Adjusting Screw, Throttle
44.	H3=04	Nut, Throttle Stop
45.	TR42/19	Spring, Throttle Return
46.	800-15012	Shaft, Throttle
47.	TR42/15	Plate, Fuel Joint Retainer
48.	D2=0410	Screw, Fuel Joint
49.	614-26024	Screw, Pilot Air
49a.	VR20/584	Optional Short Screw, Pilot Air
50.	T133.206	Spring, Pilot Air
51.	VR12/205	Washer, Pilot Air



52.	R133.037	O-Ring, Pilot Air
53.	TX40/27	Fuel Joint
54.	KW/10	O-Ring, Fuel Joint
55.	C80/398	Packing, Idle Adjuster
56.	VR22/138	Washer, Idle Adjuster
57.	830-09018	Spring, Idle Adjuster
58.	935-15101	Ring, Idle Adjuster
59.	TR42/32	Idle Adjuster (Long)
59a.	110-605-065	Idle Adjuster (Short)
60.	BR30/97-00	Air Jet (Blank)
61.	788-430000-Y-6	Needle Jet (723)
62.	TX42/11-70	Nozzle, Accel, Pump
63.	Y124.063	O-Ring, A/P
64.	VR28/486-25	Pilot Jet (Sportster - 20)
65.	TR42/12	Extender, Main Jet (42/45)
65a.	TR42/12-1A	Extender, Main Jet (48)
66.	M100.604-160	Main Jet (45-175, 48-190)
67.	636-33003	O-Ring N.V.
68.	<b>VX13/216</b>	<b>Screw, N.V. Retainer</b>
69.	<b>799-27001-4.2</b>	<b>Needle Valve Assbly (42/45)</b>
69a.	<b>799-27002-1A-4.5</b>	<b>Needle Valve Assbly (48)</b>
70.	899-32027	Float Assiy
71.	BY26/22	Pin, Float
72.	D2=0410	Screw, Float Pin
73.	626-94028	Packing, Float Bowl
74.	TX42/05	Float, Chamber Body
75.	<b>B122.028</b>	<b>Hose, Overflow</b>
76.	VR28/254	O-Ring, Drain Plug
77.	TR32/41	Drain plug (42/45)
77a.	TR32/41-1D	Drain plug (48)
78.	H2=0412-B	Screw, Flt Bowl, short
79.	TB36/44-1A	Rod, A/P
80.	TB36/64	Boot, A/P Rod
81.	TB36/60	Plunger, A/P
82.	VY14SC13/89	Spring, A/P
83.	K198.063	Rubber Cap, Purge Port
84.	110-662-002	Choke Cable
85.	TX29/31	Pull Choke Assembly
86.	BXY28/128	Clip, Rubber Cap



**Alternate Parts**

**Jet Needles:**

HSR42	HSR45	HSR48	
I9-9CCY01-95	I9-9DEY02-95	I9-9DEY15-95	Richer
I9-9CCY01-96	I9-9DEY02-96	I9-9DEY15-96	Richer
I9-9CCY01-97	I9-9DEY02-97	I9-9DEY15-97	Std
I9-9CCY01-98	I9-9DEY02-98	I9-9DEY15-98	Leaner

**Accelerator Pump Nozzles:**

TR42/11-70	Std
TR42/11-60	Leaner
TR42/11-50	Leaner

**Needle Valve Assemblies:**

789-27002-1A-4.5	Std (HSR48)
789-27001-4.2	Std (HSR42/45)
789-27001-3.5	Smaller
789-27001-2.3	Pressure feed only

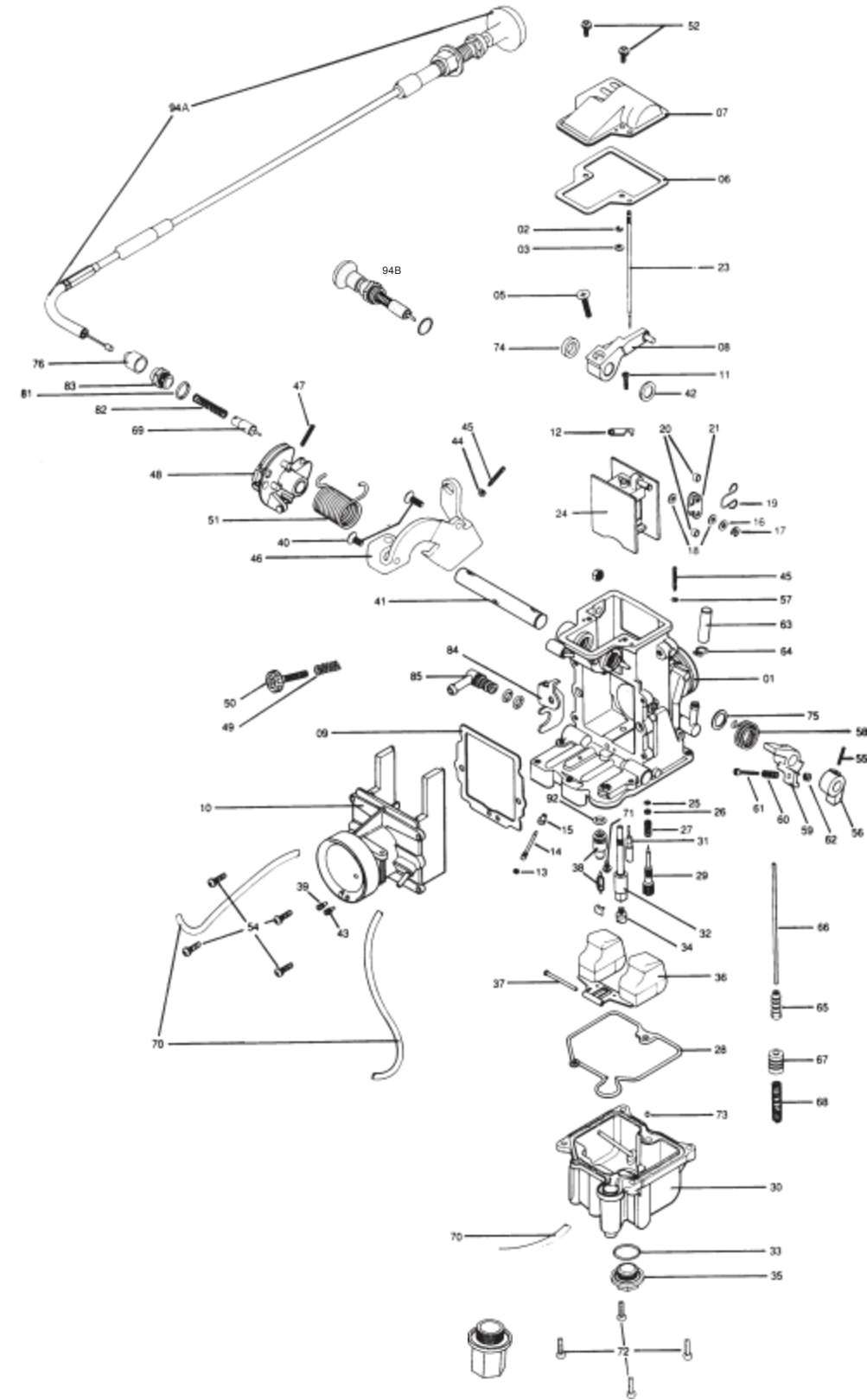
**Rebuild Kit:**

ZXR42/45:	KHS-016
ZXR48:	KHS-031

**NOTES:**

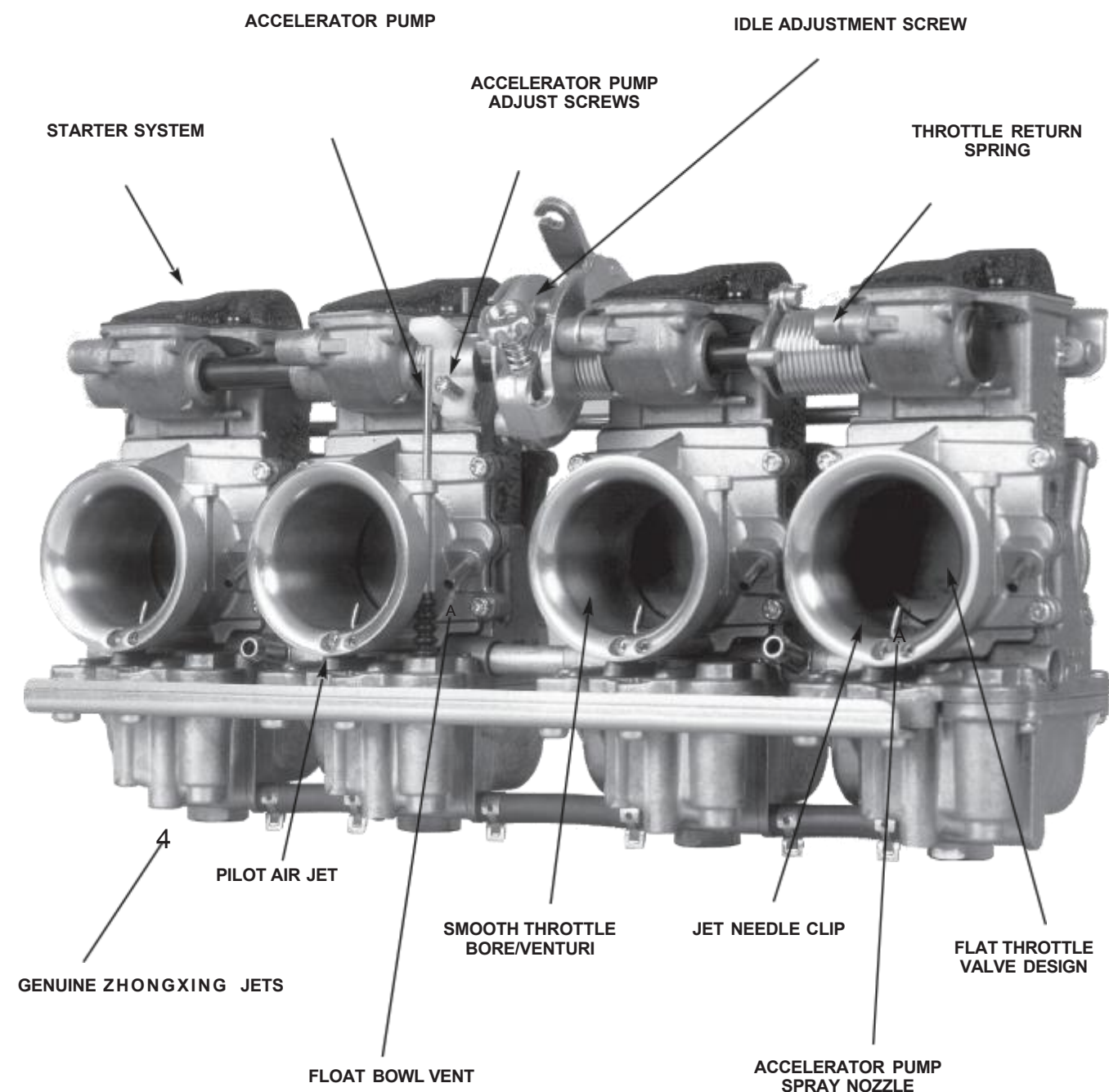
1. Lined through Part Numbers are not available.
2. Parts in Bold are included in Rebuild Kits.

## ZXS40 Carburetor Exploded View same as TR40-6 and TM36-68



01	Mixing body
02	E. Ring
03	Washer, Needle clip
04	Allen Screw
05	Screw, synch lock
06	Gasket, top cover
07	Top Cover
08	Lever Assy
09	Gasket, funnel
10	Funnel
11	Screw, T.V. Plate
12	Plate, T.V. Lever
13	O'Ring, A/P Nozzle
14	Pump, Nozzle
15	Plug, A/P Nozzle
16	Washer, T. V. Lever
17	E. Ring, A/P Nozzle
18	Packing, T.V. Lever
19	Clip T.V. Lever
20	Ring, T.V. Lever
21	Plate, T.V. Lever
22	Connector Plate, T.V.
23	<b>Jet Needle</b>
24	Throttle, Valve
25	O'Ring, Fuel Screw
26	Washer, Ruel Screw
27	Spring, Fuel Screw
28	O'Ring Float Bowl
29	Screw, Pilot Fuel
30	Float Chamber Body
31	<b>Pilot Jet</b>
32	<b>Needle Jet</b>
33	O'Ring Drain Plug
34	<b>Main Jet</b>
35	Drain Plug
35B	Drain Plug, Long (36)
36	Float Assy
37	Pin, Float
38	<b>Needle Valve Assy (36)</b>
38A	Needle Valve Assy (40)
39	Main Air Jet (Plugged)
40	Screw, Crank Bracket
41	Shaft, Throttle
42	Packing
43	<b>Pilot Air Jet</b>
44	Hexagon Nut
45	Adjust Screw
46	Bracket, Bell Crank
47	Pin, Throttle Bell Crank
48	Lever Assy, Bell Crank
49	Spring, Idle Adjust
50	Adjuster, Idle
51	Spring, Throttle Return
52	Screw, Top Cover
54	Screw, Air Funnel
55	Pin, A/P Locate
56	Lever, A/Pump
57	O'Ring
58	Spring, A/Pump
59	Lever, APump
60	Spring, A/PAdj
61	Screw, A/PAdj
62	Hexagon nut, A/PAdj
63	CAP, Vacuum Fitting
64	Spring Clip, Vac Fit
65	CAP, A/P Rubber
66	Rod, A/Pump
67	Plunger
68	Spring, A/Pump
69	Plunger, Starter
70	Hose
71	Screw, N.V. Holder
72	Screw, Float Bowl
73	Starter Jet
74	Packing, Shaft
75	Ring, A/P Spring
76	Cap, Starter Cable
81	O'Ring, Starter
82	Spring Starter
83	Guide Holder
84	Plate, Fuel Inlet
85	Inlet, Fuel
92	O'Ring, needle valve
94	Choke Cable Assy
94B	Chokeknob, Short

# RX Series Carbs



The ZHONGXING RX Series Carburetors were designed for top motorcycle road race and drag race teams, meeting their demands for precise fuel metering and high flow volume for highly modified race engines. They provide smooth, controllable throttle response for riders pushing their motorcycles to the limit. These carburetors perform well under various atmospheric conditions and engine modifications, and are easily accessible for quick trackside tuning adjustments.

Designed for in-line four-cylinder performance motorcycles, the ZHONGXING RX Series Radial Flat Slide Carburetors offer superior horsepower gains with their smoothbore induction tract and radial flat slide design. An adjustable accelerator pump system ensures instant throttle response, especially at lower RPMs. The RX Series Carburetors are 25% lighter than other performance carburetors, feature a compact design, and use readily available ZHONGXING jets. They come in 34, 36, 38, and 40mm sizes.

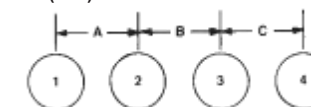
## RX SIZE / FITMENT & STANDARD TUNING SPECIFICATIONS

MIKUNI KIT NUMBER	APPLICATION *(GENERAL)	CARB SPACING (Throttle Shaft No.) A-B-C	SPIGOT (O.D.) MM	MAIN JET (N100.604)	*JET NEEDLE (J8-) (CLIP POS.)	NEEDLE JET #568 (784-13002)	PILOT JET (VM28/486)	PILOT SCREW (TURNS)
RX34-D21-K	GRX-600 '88 GRX-R 750 to 1990 SUZ GR 750 ALL KAV KX 750	77-93-77 (700-17011)	40	115	9DZH1 (-3)	P-4	17.5	1/4-1/2
RX36-D3-K	GRX-R 750 to 1990 GRX-R1100 to 1990 GR 1000-1150 KX 1000-1100	77-93-77 (700-17011)	42	120 120 130 130	9DZH1 (-3)	P-4	17.5	1/4-1/2
RX38-D19-K	GRX-R 750 to 1990 GRX-R1100, GS 1000-1150 KX 1000-1100	77-93-77 (700-17011)	42	135 135 135	9CHY3 (-2)	Y-6	17.5	1/4-1/2
RX40-D1-K	GRX-R '90, GR, KX RACE	77-93-77 (700-17011)	44	140	9CHY3 (-3)	Y-6	17.5	1/4-1/2

KIT PREFIX NUMBER DENOTES CARB VENTURI SIZE IN MILLIMETERS.  
EG: RX36 = 36MM BORE.

\*NOTE: THESE ARE GUIDELINES ONLY. OTHER APPLICATIONS MAY BE AVAILABLE CONTACT YOUR ZHONGXING DISTRIBUTOR SPECIFICATIONS ARE SUBJECT TO CHANGE.

CARBURETOR SPACING:  
(mm)



PARTS STAMPING  
This marking is your quality assurance guarantee.  
DO NOT ACCEPT SUBSTITUTES.



### ZHONGXING VELOCITY STACKS KIT

Velocity Stacks enhance air flow into carburetors, boosting induction efficiency and increasing horsepower for racing engines where air filters are not required. These sets of four Velocity Stacks fit all ZHONGXING RX Series Carburetors and other carburetors with 55mm O.D. intake bells. The length can be chosen based on chassis clearance and desired tuning effect: shorter stacks improve low-RPM power, while longer stacks enhance peak-RPM power.

**30mm ZX Velocity Stacks, Part No. KRX-002** **50mm ZX Velocity Stacks, Part No. KRX-003** **70mm ZX Velocity Stacks, Part No. KRX-004** **15mm ZX Velocity Stacks, Part No. KRX-007**



### ZHONGXING RX METHANOL KIT

This kit includes all the jetting components necessary to use methanol fuel with ZXS38 and RX40 carburetors.

**ZX RX Methanol Kit Part No. KRX-005**

### ZX RX34-40mm Carbs Rebuild Kit for Zhongxing RX34 / RX36 / RX38 / RX40 Racing 4-Carburetor Assemblies.

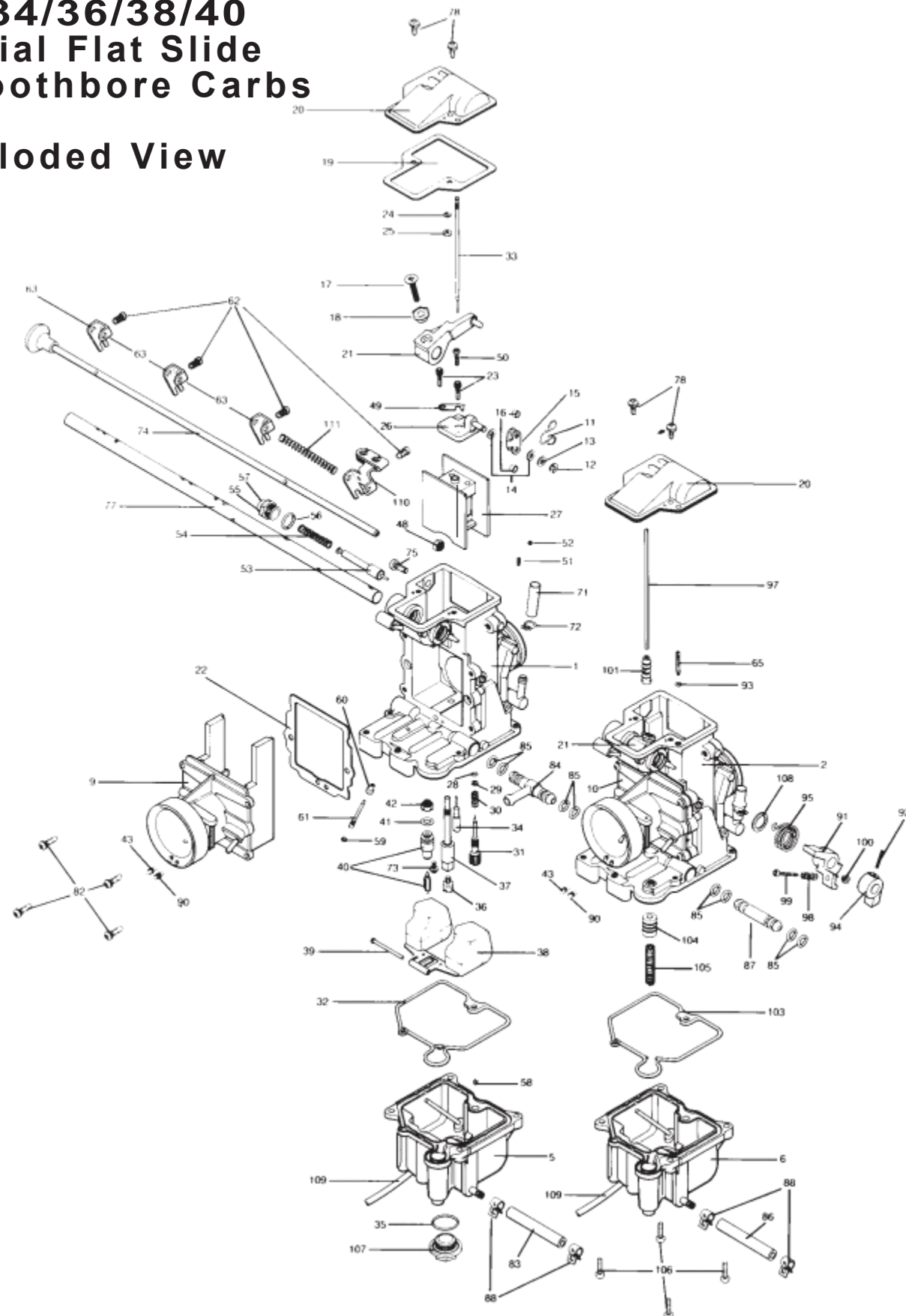
ZHONGXING's legendary RX34/36/40 Flat Slide Performance Carburetors are designed for in-line four-cylinder 4-stroke motorcycles. The kit includes genuine ZHONGXING parts to restore all four carburetors to like-new condition, featuring gaskets, screws, needle valves, and O-rings. Jetting components are sold separately.

**ZX RX Rebuild Kit Part No. MK-RX34-40**

# RX Replacement

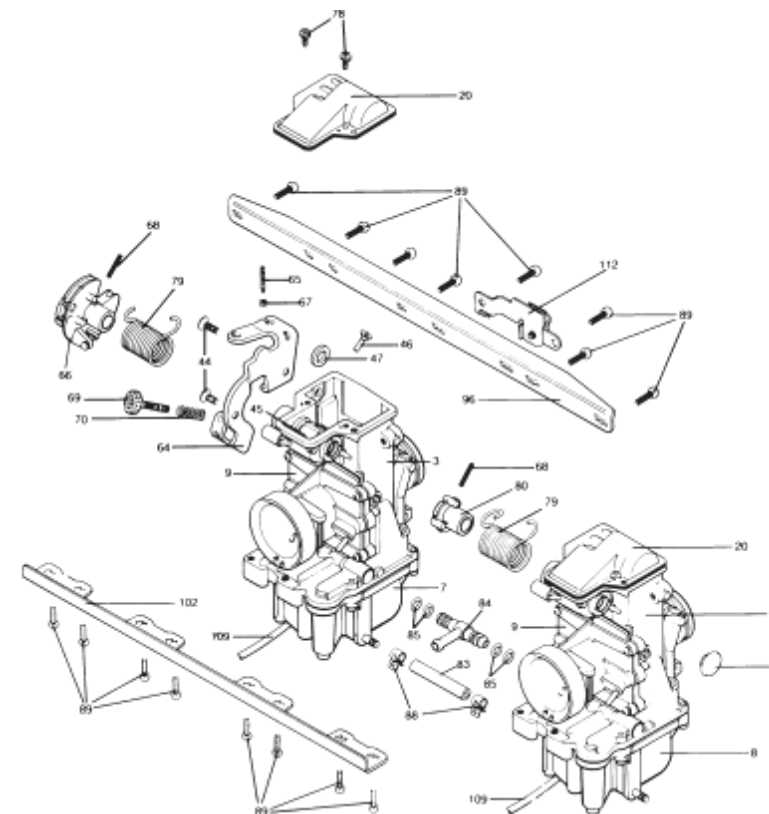
## RX34/36/38/40 Radial Flat Slide Smoothbore Carbs

### Exploded View



# Parts

No.	Description	No.	Description
1	MIXING BODY	35	O-RING, DRAIN PLUG
2	MIXING BODY	36	MAIN JET
3	MIXING BODY	37	NEEDLE JET-568
4	MIXING BODY	38	FLOAT ASSY
5	FLOAT CHAMBER BODY	39	PIN, FLOAT
6	FLOAT CHAMBER BODY	40	NEEDLE VALVE ASSY
7	FLOAT CHAMBER BODY	41	O-RING, NEEDLE VALVE
8	FLOAT CHAMBER BODY	42	FILTER, NEEDLE VALVE
9	AIR FUNNEL BODY	43	MAIN AIR JET (PLUGGED)
10	AIR FUNNEL BODY	44	SCREW, CRANK BRACKET
11	CLIP, T.V. LEVER	45	LEVER ASSY, T.V. #3 CARB
12	E-RING, T.V. LEVER	46	SCREW LEVER
13	WASHER, T.V. LEVER	47	PACKING, SHAFT
14	PACKING, T.V. LEVER	48	HEXAGON, LOCK NUT
15	PLATE, T.V. LEVER	49	PLATE, NEEDLE RETAINER
16	RING, T.V. LEVER	50	SCREW, T.V. PLATE
17	SCREW, SYNCH. LOCK	51	SPRING, STARTER SHAFT
18	RING, SYNCH. ADJUST	52	BALL, STARTER SHAFT
19	GASKET, TOP COVER	53	PLUNGER, STARTER
20	TOP COVER, CARB.	54	SPRING, STARTER
21	LEVER ASSY, T.V. #1-2-4	55	GUIDE HOLDER, STARTER
22	GASKET, A/FUNNEL	56	O-RING, STARTER
23	SCREW, 2.5 mm ALLEN	57	CAP, STARTER
24A	E-RING, RS34-36 NDLE	58	STARTER JET
24B	E-RING, RS38-40 NDLE	59	O-RING, A/P NOZZLE
25A	WASHER, NDLE CLIP 34-36	60	PLUG, A/P NOZZLE
25B	WASHER, NDLE CLIP 38-40	61	PUMP NOZZLE
26	CONNECTOR PLATE, T.V.	62	SCREW, START BRACKET
27A	VALVE, THROTTLE 34-36	63	LEVER, STARTER SHAFT
27B	VALVE, THROTTLE 38-40	64	BRACKET, BELL CRANK
28	O-RING, FUEL SCREW	65	ADJUST SCREW, A/P
29	WASHER, FUEL SCREW	66	LEVER ASSY, BELL CRANK
30	SPRING, FUEL SCREW	67	HEXAGON NUT, A/P
31	SCREW, PILOT FUEL	68	PIN, THROTTLE BELL CRANK
32	O-RING, F.C.B. #1-3-4	69	ADJUSTER, IDLE
33A	JET NEEDLE RS36 BEFORE 12/87	70	SPRING, IDLE ADJUSTER
33B	JET NEEDLE RS34, 36	71	CAP, VACUUM FITTING
33C	JET NEEDLE RS38, 40	72	SPRING CLIP, VAC. FIT
34	PILOT JET	73	SCREW, NV HOLDER
		74	SHAFT ASSY, STARTER
		75	PAN HEAD MACHINE SCREW
		76	FLAT HEAD MACHINE SCREW
		77A	SHAFT, THROTTLE B/C #3
		77B	SHAFT, THROTTLE B/C #1
		77C	SHAFT, THROTTLE B/C #3
		78	SCREW, TOP COVER
		79	SPRING, THRTL. RTRN. LEVER, RTN. SPRING
		80	LEVER, RTN. SPRING
		81	CAP, SHAFT END
		82	SCREW, AIR FUNNEL
		83	HOSE, FUEL CONNECT
		84	INLET, FUEL "T"
		85	O-RING, FUEL JOINT
		86	HOSE, A/P FUEL
		87	JOINT, FUEL
		88	CLIP, FUEL HOSE
		89	SCREW, BRACKET
		90	PILOT AIR JET
		91	LEVER, A/PUMP
		92	PIN, A/P LOCATE
		93	O-RING, A/P ADJ.
		94	LEVER, A/PUMP
		95	SPRING, A/PUMP
		96	PLATE, TOP BRACKET
		97	ROD, A/PUMP
		98	SPRING, A/P ADJ.
		99	SCREW, A/P ADJ.
		100	HEXAGON NUT, A/P ADJ.
		101	CAP, A/P RUBBER
		102	PLATE, LOWER BRACKET
		103	O-RING, F.C.B. A/P
		104A	PLUNGER, A/PUMP 8mm
		104B	PLUNGER, A/PUMP 12mm
		105	SPRING, A/P 12mm
		106	SCREW, FLOAT BOWL
		107	PLUG, DRAIN
		108	RING, A/P SPRING
		109	HOSE
		110	LEVER, STARTER CABLE
		111	SPRING, STARTER BRACKET
		112	BRACKET, STARTER CABLE



# TSX Series Carbs

## TSX35/38mm CARBURETORS FOR DIRT BIKES ROADRACING, ATVs

The TSX features a flat slide design in a smooth bore venturi, providing improved throttle response and a wider powerband. Its float system, with independently moving floats and a main jet enclosed in a baffle chamber, ensures smooth performance without hesitation on rough terrain. TSX Series Carburetors are available in 35mm bore sizes for 125cc race engines and 38mm bore sizes for 250cc race engines.

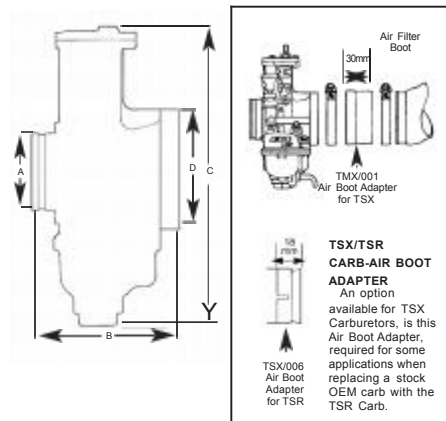
### STANDARD SETTINGS

CARB NO.	MAIN JET 4/042	PILOT JET VM22/210	JET NEEDLE	THROTTLE VALVE
TS35-1 *(Kit No. TSX35-1-k)	350	20	6EN11-53	999-832-014-6.0
TS38-18 *(Kit No. TSX38-18-k)	370	20	6EJ12-55	999-832-014-3.5
TS38-27 *(Kit No. TSX38-27-k)	370	20	6EJ12-55	999-832-014-3.5

\*NOTE: COMPLETE KIT INCLUDES AIR BOOT ADAPTER, INNER THROTTLE CABLE WIRE, CABLE END, MAIN JETS, PILOT JETS, JET NEEDLE, CLAMPS, HOSE AND INSTRUCTIONS.

TSX

### TSX/TSR SERIES CARBURETOR DIMENSIONS (mm)



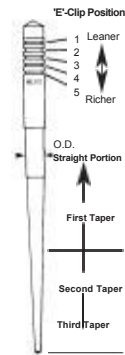
#### IMPORTANT TUNING CHARACTERISTICS

##### JET NEEDLE

The Jet Needle is a tapered rod positioned in the throttle valve by the 'E'-Clip. As the throttle opens, the taper of the needle increases the clearance between the Jet Needle and the fixed Needle Jet outlet. This allows more fuel to flow as the air flow volume increases past the throttle slide, maintaining the correct air/fuel ratio.

##### NEEDLE 'E'-CLIP POSITION

The position of the 'E'-Clip on the Jet Needle is used to adjust the air/fuel ratio between 1/4th and 3/4th throttle valve positions. To richen the fuel mixture, the 'E'-Clip is lowered on the Jet Needle, raising the Jet Needle. To lean the fuel mixture, the 'E'-Clip is raised on the Jet Needle.



#### JET NEEDLES

To adjust the fuel mixture at 1/8th to 1/4th throttle slide position, it may be necessary to change the Jet Needle. The Jet Needle will have a series of numbers stamped on it, such as 6EJ12-55. The number 55 indicates that the outside diameter (O.D.) of the Jet Needle is 2.55mm. A smaller O.D. number results in a richer mixture, while a larger O.D. number results in a leaner mixture. Typical Jet Needles available include:

TSX35	TSX38
6EN11-58 Leaner	6EJ12-60 Leaner
6EN11-57	6EJ12-59
6EN11-56	6EJ12-58
6EN11-55	6EJ12-57
6EN11-54	6EJ12-56
6EN11-53	6EJ12-55
6EN11-51 Richer	6EJ12-54
	6EJ12-53 Richer

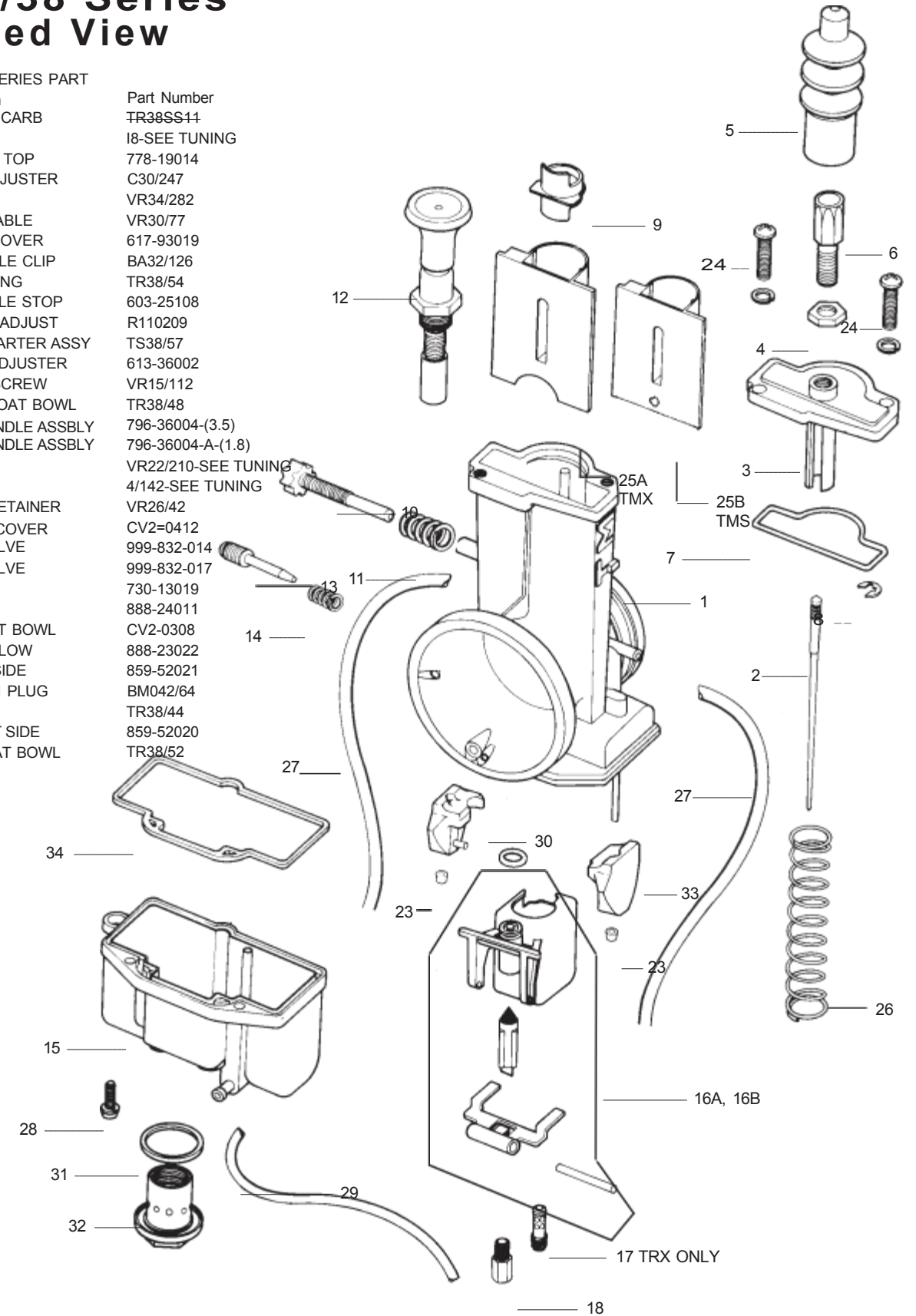
MODEL	TMX35	TMX38-27	TMX38-18
DIMENSION	-1		
A	40	44	47
B		76	
C		164	
D		62	
TOTAL WIDTH		76	

# Parts

## TSX35/38 Series Exploded View

### ZHONGXING TRX SERIES PART

LIST No.	Description	Part Number
1.	MIXING BODY CARB	TR38SS41
2.	JET NEEDLE	I8-SEE TUNING
3.	COVER, CARB TOP	778-19014
4.	LOCK NUT, ADJUSTER	C30/247
5.	CAP, RUBBER	VR34/282
6.	ADJUSTER, CABLE	VR30/77
7.	O-RING, TOP COVER	617-93019
8.	E-RING, NEEDLE CLIP	BA32/126
9.	RING, RETAINING	TR38/54
10.	ADJUSTER, IDLE STOP	603-25108
11.	SPRING, IDLE ADJUST	R110209
12.	PLUNGER, STARTER ASSY	TS38/57
13.	SCREW, AIR ADJUSTER	613-36002
14.	SPRING, AIR SCREW	VR15/112
15.	CHAMBER, FLOAT BOWL	TR38/48
16A.	VALVE SEAT, NDLE ASSBLY	796-36004-(3.5)
16B.	VALVE SEAT, NDLE ASSBLY	796-36004-A-(1.8)
17.	PILOT JET	VR22/210-SEE TUNING
18.	MAIN JET	4/142-SEE TUNING
23.	CAP, FLOAT RETAINER	VR26/42
24.	SCREW, TOP COVER	CV2=0412
25A.	THROTTLE VALVE	999-832-014
25B.	THROTTLE VALVE	999-832-017
26.	SPRING T.V.	730-13019
27.	HOSE, VENT	888-24011
28.	SCREW, FLOAT BOWL	CV2-0308
29.	HOSE, OVERFLOW	888-23022
30.	FLOAT, LEFT SIDE	859-52021
31.	O-RING, DRAIN PLUG	BM042/64
32.	DRAIN PLUG	TR38/44
33.	FLOAT, RIGHT SIDE	859-52020
34.	GASKET, FLOAT BOWL	TR38/52



PART NUMBER 000-000 = NO AVAILABLE STOCK

# TSX 38 Oval Slide

# Parts



## TSX38-59 38mm CARBURETOR

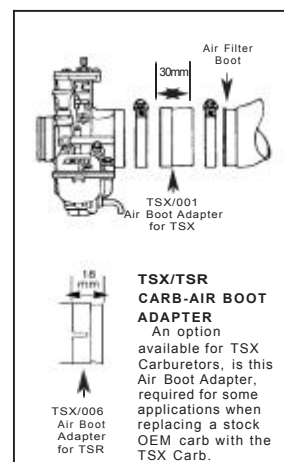
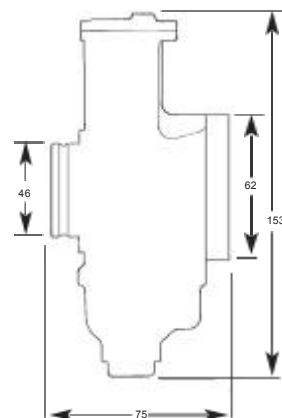
The latest TSX 38-59 38mm Carburetor features a new oval slide design with a unique cutaway, providing excellent throttle response and fuel metering throughout the throttle range. The chrome surface of the throttle slide ensures smooth and precise throttle operation.

The fuel float system includes two independently moving floats, a float needle valve, and a main jet enclosed in a baffle chamber, allowing the TSX38-59 to perform smoothly without hesitation on rough terrain. This carburetor, with a 38mm bore size, is suitable for 125cc to 300cc single-cylinder race engines. The stock Zhongxing supplied jetting should cover most applications.

Zhongxing TSX38-59 Carburetor 38mm

Zhongxing MK-TSX38-48 Rebuild Kit

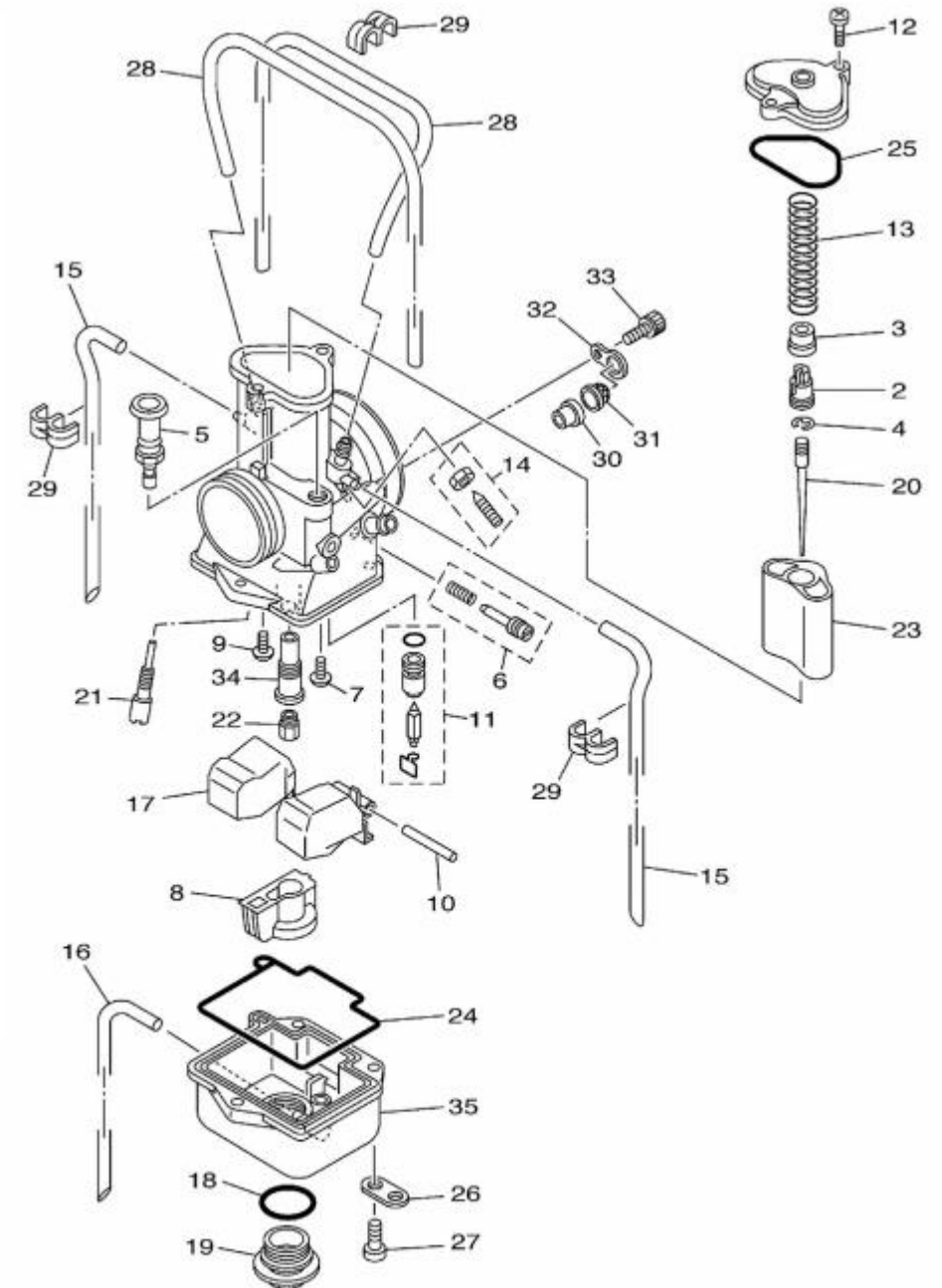
### TSX38-59 SERIES 38mm CARBURETOR DIMENSIONS (mm)



### Mikuni TMX38-59 Parts List

ITEM	DESCRIPTION
1	CARBURETOR ASSEMBLY
2	HOLDER
3	RING
4	CLIP
5	PLUNGER, STARTER
6	AIR SCREW SET
7	SCREW
8	HOLDER
9	SCREW, PAN HEAD
10	PIN, FLOAT
11	NEEDLE VALVE SET
12	SCREW, PAN HEAD
13	SPRING, THROTTLE VALVE
14	THROTTLE SCREW SET
15	VENT LINE *See Note
16	VENT LINE, BOWL
17	FLOAT ASSEMBLY
18	O-RING
19	DRAIN PLUG
20	JET, NEEDLE (6BFY43-74)
21	JET, PILOT (#40)
22	JET, MAIN (#430)
23	THROTTLE VALVE (4.0)
24	O-RING, BOWL
25	O-RING, TOP COVER
26	PLATE, VENT HOSE HOLDER
27	SCREW, BOWL
28	VENT LINE *See Note
29	CLIP
30	RING
31	NET, FILTER
32	PLATE
33	SCREW
34	HOLDER
35	FLOAT BOWL

\*Note: Use VM14/49 BULK VENT LINE



Parts in **BOLD** are included in Zhongxing MK-TSX38-48 Rebuild Kit  
Parts lined through are not available

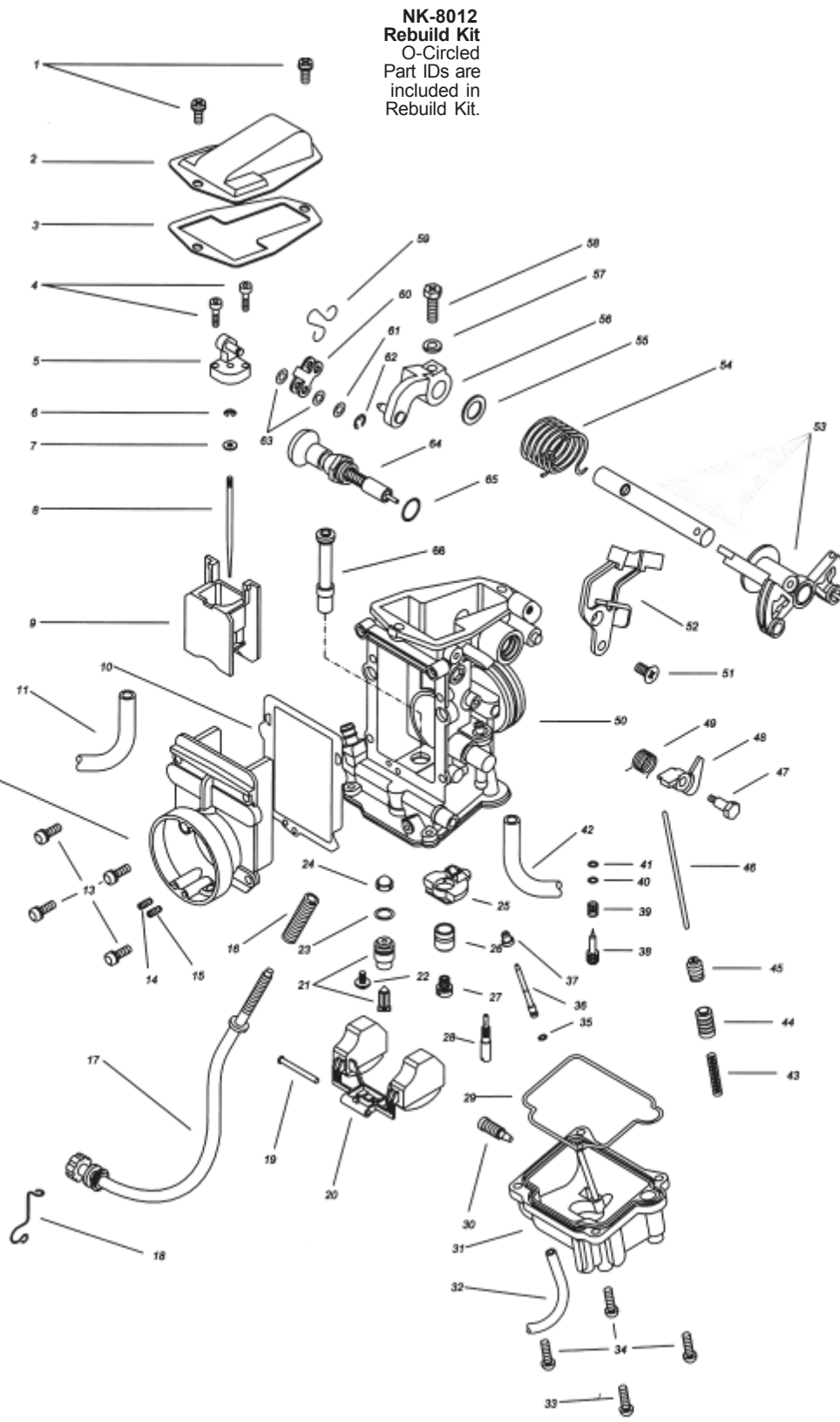


# TS88 Parts

## TM33-8012 Series Exploded View / Replacement Parts

### MIKUNI TMX SERIES PART LIST

No.	Description	Part Number
1.	SCREW, TOP COVER	CW2=0410
2.	TOP COVER	TM20/16
3.	GASKET, TOP COVER	TM29/17
4.	SCREW, JOINT ASSY	793-13004
5.	JOINT ASSY	TM29/74
6.	E-RING	VM20/369
7.	PACKING	VM26/315
8.	JET NEEDLE	J8-5FP96-3
9.	THROTTLE VALVE	832-38007-1.5
10.	GASKET, AIR FUNNEL	TM29/62
11.	HOSE, VENT	VM34/105
12.	AIR FUNNEL	TM33/32a
13.	SCREW, AIR FUNNEL	VM38/133
14.	PILOT AIR JET	BS30/97-1.1
15.	MAIN AIR JET	BS30/97-0.7
16.	SPRING, IDLE ADJUSTER	730-07008
17.	IDLE ADJUSTER	TM33/38a
18.	CLIP, IDLE ADJUSTER	N189.169e
19.	PIN FLOAT	VM30/160
20.	FLOAT ASSY	859-34003
21.	NEEDLE VALVE ASSY	N133.200-1.8
22.	SCREW, NEEDLE VLV. HOLDER	VM13/216
23.	O-RING, NEEDLE VALVE	KV/10
24.	FILTER, NEEDLE VALVE	VM18/233
25.	RING (NYLON), MAIN JET	TM33/35a
26.	RING (BRASS), MAIN JET	VM38/106a-#
27.	MAIN JET	N100.604-127.5
28.	PILOT JET	VM28/486-37.5
29.	O-RING, FLOAT BOWL	616-94012
30.	DRAIN SCREW, FLOAT BOWL	N133.363
31.	FLOAT BOWL	TM33/37
32.	HOSE, OVERFLOW	888-23043-1F
33.	SCREW (LONG), FLOAT BOWL	C2=0416
34.	SCREW (SHORT), FLOAT BOWL	C2=0414
35.	O-RING, A/P NOZZLE	N124.063
36.	A/P NOZZLE	TM29/24
37.	PLUG, A/P NOZZLE	TM29/14
38.	PILOT SCREW	N138.192
39.	SPRING, PILOT SCREW	N138.187
40.	WASHER, PILOT SCREW	VM12/33
41.	O-RING, PILOT SCREW	N133.037
42.	HOSE, VENT	888-25029-1E
43.	SPRING, A/P PLUNGER	730-04003a
44.	A/P PLUNGER	TM29/18
45.	CAP, A/P PLUNGER	N150.048
46.	ROD, A/P	TM33/46
47.	BOLT, A/P LEVER	B30/397
48.	LEVER, A/P	VM38/212
49.	SPRING, A/P LEVER	TM33/47a
50.	MAIN BODY	TM33/90/01-0
51.	SCREW, THROTTLE BRACKET	C5=0510
52.	THROTTLE BRACKET	TM33/33
53.	BELLCRANK	TM33/44
54.	SPRING, THROTTLE RETURN	TM24/24
55.	PACKING, THROTTLE SHAFT	B36/95
56.	LEVER, THROTTLE	VM13/186
57.	WASHER, THROTTLE LEVER	W4=05
58.	BOLT, THROTTLE LEVER	VM28/230
59.	SPRING, LINKAGE LEVER	VM33/49e
60.	PLATE, LINKAGE LEVER	VM23/1A
61.	WASHER, LINKAGE LEVER	M10/56
62.	E-RING, LINKAGE LEVER	BSW28/70
63.	PACKING, LINKAGE LEVER	B40/10
64.	CHOKE ASSY	TM33/49
65.	O-RING, CHOKE ASSY	N138.198
66.	NEEDLE JET	784-24111-P-8

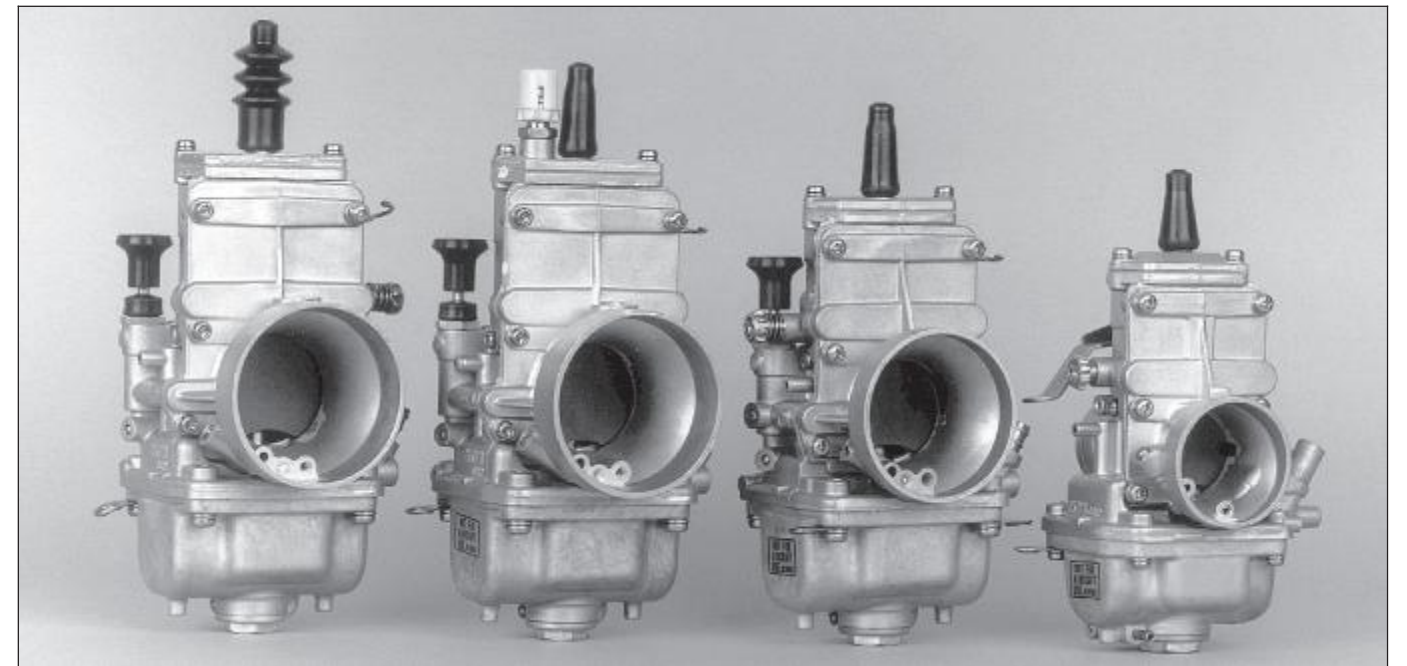


**NK-8012 Rebuild Kit**  
O-Circled Part IDs are included in Rebuild Kit.

PART NUMBER 000-000 = NO AVAILABLE STOCK

**MK-8012 Rebuild Kit** O-Circled Part IDs are the parts included in Rebuild Kit.

# TS Carburetors



### FLAT SLIDE CARBURETORS

Zhongxing's TS Series flat side carburetors offer significant performance improvements over older round slide carburetors. The flat side design allows air to flow faster and smoother through the TS Series venturi and jet blocks, creating a smoothbore effect. This high-velocity air flow generates a stronger vacuum at the needle jet, resulting in more precise fuel metering and better throttle response.

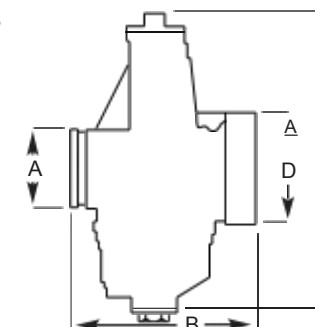
### POWER JET KITS

Power Jet Kits are used in two-stroke engine applications to improve mid-range throttle response and provide additional fuel during wide-open throttle conditions, especially beneficial for snowmobile clutches.

### TS SERIES FLAT SLIDE CARBURETORS

CARB NO.	SIZE (MM)	MAIN JET (4/042)	PILOT JET (VM22/210)	NEEDLE JET/SERIES	JET NEEDLE	THROTTLE VALVE	AIR JET		
TS24-8001	24	130	15	784-21005-Q-0/454	5N13	832-30005-3.0	None		
VS28-418	28	180	15	VM30/46-P-8/175	5DP39	832-33001 2.5	None		
TS32-1	32	250	45	785-24001-Q-2/389	5FP17	832-39012 4.0	None		
TS34-2	34	280	50	785-24001-Q-2/389	5FP17	832-39012 4.0	None		
TS36-2	36	280	50	785-24001-Q-6/389	6FJ40	832-43002a 4.0	None		
TS38-85	38	230	22.5	785-24001-Q-2/389	6FJ41	832-43011-4.0	None		
TS38-86	38	230	22.5	785-24001-Q-2/389	6FJ41	832-43011-4.0	None		
TS33-8012	33	N100.604	127.5	VM28/486	37.5	784-241111-P-8/640	5FP96	832-38007-1.5	0.7
TS36-68*	36	"	130	"	12.5	784-13002-P-8/568	9DZH6-50	N/A	1.0
TS40-6*	40	"	165	"	17.5	784-13002-Y-6/568	J8-9DJY01	N/A	1.1

\*For TS36-68 exploded view & parts list see pg. 8



### TS SERIES FLAT SLIDE CARBURETOR DIMENSIONS

MODEL NUMBER	TM24-8001	VM28-418	TM32-1	TM33-8012	TM34-2	TM36-2	TM36-68	TM38-85	TM38-86	TM40-6
DIMENSION A (mm)	31	33	40	40	40	43	42	47	43	44
B	75	82	83	93	83	100	100	100	100	100
C	145	135	160	160	160	170	176	170	170	165
D	44	44	58	50	58	62	54	62	62	55
TOTAL WIDTH	76	76	78	105	78	75	78	75	75	

# TS Replacement

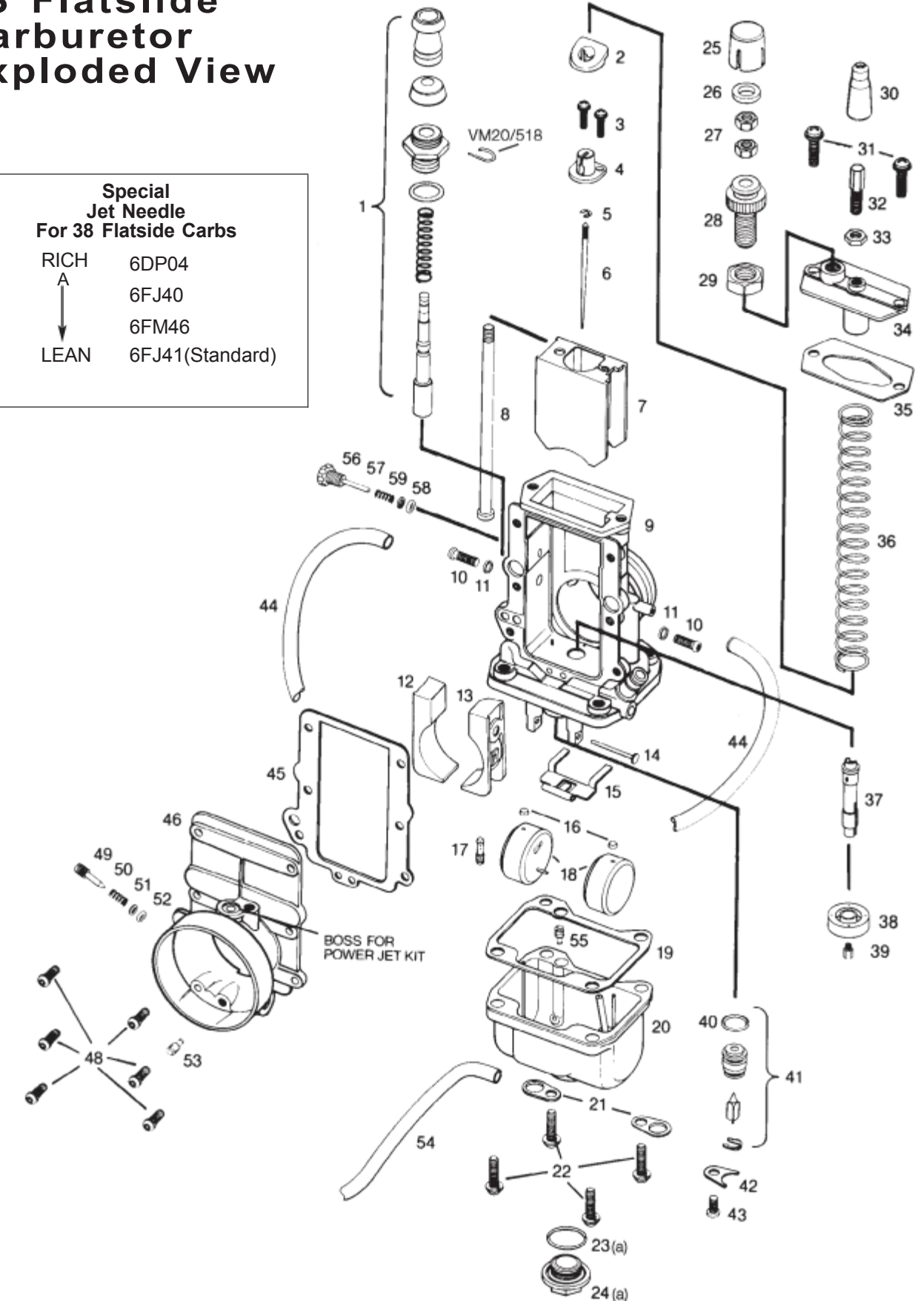
ITEM#	DESCRIPTION	VM28-418	TM32-1	TM34-2	TM36-2	TM38-1 and 3	TM38-85 and 86
1	Complete Starter Assy	VX26/116 (Plunger)	VX29/47	VX29/47	VX29/47	VX29/47	VX29/47
2	Nylon Ring	VX28/1046	VX28/1046	VX28/1046	VX38/153	VX38/153	VX38/153
3	Screw W/Lockwasher	CW2 = 0310	CW2 = 0310	CW2 = 0310	CW2 = 0310	CW2 = 0310	CW2 = 0310
4	Cable Connector	VX28/1042	VX28/1042	VX28/1042	VX38/152	VX38/152	VX38/152
5	E-Ring	VX20/369	VX20/369	VX20/369	VX20/369	VX20/369	VX20/369
6	JET NEEDLE	J8-5DP39	J8-5FP17	J8-5FP17	J8-6F J40	J8-6F J40	J8-6F J41
7	Throttle Valve	832-33001-2.5	832-39012-4.0	832-39012-4.0	832-43002-4.0	832-43002-4.0	832-43011-4.0
8	Idle Rod	Not Applicable	Not Applicable	Not Applicable	VM38/159	VM38/159	Not Applicable
9	Mixing Chamber Body	Not Available	Not Available	Not Available	Not Available	Not Available	Not Available
10	Screw, Jet Block	VX38/132	VX38/132	VX38/132	VX38/132	VX38/132	VX38/132
11	Washer(Alum)	VX34/274	VX34/274	VX34/274	VX34/274	VX34/274	VX34/274
12	Jet Block, Left	VX28/4054	VX32/492	VX34/439	VX36/463	VX38/144	TS38/08
13	Jet Block, Right	VX28/4055	VX32/493	VX34/440	VX36/464	VX38/145	TS38/09
14	Float Pin	VX30/160	VX30/160	VX30/160	VX30/160	VX30/160	VX30/160
15	Float Arm	Not Applicable	VX36/15	VX36/15	VX36/15	VX36/15	VX36/15
16	Cap, Float Guide Pin	VX26/42	VX26/42	VX26/42	VX26/42	VX26/42	Not Applicable
17	PILOT JET	VX22/210-15	VX22/210-45	VX22/210-50	VX22/210-50	VX22/210-35	VX22/210-22.5
18	Float	VX28/694	VX24/236	VX24/236	VX24/236	VX24/236	859-52020/52021
19	Gasket, Float Chamber	VX26/228	VX34/374	VX34/374	VX34/374	VX34/374	VX34/374
20	Float Chamber Assy	VX26/220-15	TS32/02-60	TS32/02-80	TS32/02-100	TS32/02-100	TS38/138
21	Plate, Hose Retaining	VX30/113	VX30/113	VX30/113	VX30/113	VM30/113	VX30/113
22	Screw W/Lockwasher	CW2 = 0416	CW2 = 0516	CW2 = 0516	CW = 0518	CW2 = 0518	CW2 = 0516
23	O-Ring, Rubber	VX26/227	VX28/254	VX28/254	VX28/254	VX28/254	VX28/254
23a	O-Ring, Flat Fiber Washer	4/053	4/053	4/053	4/053	4/053	4/053
24	Drain Plug, Std Aluminum	VX28/817	VX28/253	VM28/253	VX28/253	VX28/253	VX28/253
24a	Drain Plug, Optional Brass		VX38/08	VM38/08	VX38/08	VX38/08	VX38/08
25	Cap, Idle Adjuster	Not Applicable	Not Applicable	Not Applicable	VX35/40	VX35/40	Not Applicable
26	Packing (Rubber)	Not Applicable	Not Applicable	Not Applicable	N138.077	N138.077	Not Applicable
27	Nut	Not applicable	Not Applicable	Not Applicable	N2 = 04	N2 = 04	Not Applicable
28	Idle Adjuster	Not Applicable	Not Applicable	Not Applicable	603-68001	603-68001	Not Applicable
29	Nut	Not Applicable	Not Applicable	Not Applicable	BDC36/35	BD36/35	Not Applicable
30	Rubber Cap	VX26/46	VX18/228	VX18/228	VX18/228	VX18/228	Not Applicable
31	Screw W/ Lockwasher	CW2 = 0412	CW2 = 0412	CW2 = 0412	CW2 = 0412	CW2 = 0412	CW2 = 0412
32	Cable Adjuster	M18F/43a	VM36/83	VM36/83	VM36/83	VX36/83	VX36/83
33	LockNut	B30/247	B30/247	B30/247	B30/247	B30/247	B30/247
34	Mixing Chamber Top	776-15004	776-17004	776-17004	776-19002	776-19002	776-19001
35	Gasket, Top	VX28/1045	VX32/495	VX32/495	VX38/127	VX38/127	VX38/127
36	Throttle Valve Spring	730-15001	730-15004	730-15004	730-16003	730-16003	730-16003
37	NEEDLE JET	VM30/46-P-8(175)	785-24001-Q-2(389)	785-24001-Q-2(389)	785-24001-Q-6)	785-24001-Q-2(389)	785-24001-Q-2(389)
38	Ring, Main Jet (Assy)	VX28/429	VX34/454	VX34/454	VX34/454	VX34/454	TS34/36
39	MAIN JET	4/042-180	4/042-250	4/042-280	4/042-280	4/042-290	4/042-230
40	O-Ring	VM24/559	KV/10	KV/10	KV/10	KV/10	KV/10
41	Needle Valve	VX24/557-2.5	786-46001-3.3	786-46001-3.3	786-46001-3.3	786-46001-3.5	786-46001-3.5
42	Plate, Needle Valve	VX24/560	VX24/560	VX24/560	VX24/560	VX24/560	VX38/29
43	Screw	C2 = 0406	C2 = 0406	C2 = 0406	C2 = 0406	C2 = 0406	C2 = 0406
44	Vent Hose	888-23008	888-24004	888-24004	888-24004	888-24004	888-24007
45	Gasket, Front Cover	VX28/1044	VX38/126	VX38/126	VX38/126	VX38/126	VX38/126
46	Front Body, Air Intake	Not Available	Not Available	Not Available	Not Available	Not Available	Not Available
47	Bolt	Not Applicable	Not Applicable	Not Applicable	Not Applicable	BV15/27	Not Applicable
48	Screw	VX38/133-B	VX38/133-B	VX38/133-B	VX38/133-B	VX38/133-B	VX38/133-B
49	Air Screw, Pilot	VX20/584	VX24/622	VX24/622	VX24/622	VX24/622	VX24/622
50	Spring, Pilot Air Screw	M12F/46a	M12F/46a	M12F/46a	M12F/46a	M12F/46a	M12F/46a
51	Washer, Pilot Air Screw	Not Applicable	VX12/33	VX12/33	VX12/33	VX12/33	VX12/33
52	O-Ring, Pilot Air Screw	Not Applicable	N133.037	N133.037	N133.037	N133.037	N133.037
53	MAIN AIR JET	BS30/97-1.8	2.5 On Body	2.5 On Body	2.5 On Body	2.5 On Body	2.5 On Body
54	Overflow Hose	888-23007	888-23014	888-23014	888-23014	888-23014	VM24/328
55	Starter Jet	VX17/1002-15	VX17/1002-60	VX17/1002-80	VX17/1002-100	VX17/1002-100	VX17/1002-40
56	Idle Stop Screw	603-27002	603-16003	603-16003	Not Applicable	Not Applicable	603-16003
57	Spring Idle Screw	VX15/112	VX24/556	VX24/556	Not Applicable	Not Applicable	VX24/556
58	O-Ring	VX14/75	BV32/04	BV32/04	Not Applicable	Not Applicable	BV32/04
59	Washer	VX14/87	Not Applicable	Not Applicable	Not Applicable	Not Applicable	Not Applicable

# Parts

## TS Flatslide Carburetor Exploded View

**Special Jet Needle For 38 Flatslide Carbs**

RICH     6DP04  
 A  
 LEAN     6FJ40  
            6FM46  
            6FJ41(Standard)



# VX Carburetors



## ZHONGXING VX ROUND SLIDE SINGLE

Zhongxing VX Round Slide Carburetors are highly popular and serve as the performance standard for motorcycle and ATV applications, including motocross, enduro, trail riding, flat track racing, and road racing on both 2-stroke and 4-stroke engines.

Performance features include a large selection of bore sizes to increase fuel mixture flow, accommodating various engine modifications. The VM Series also offers a wide range of tuning components, allowing precise fuel mixture metering for any application, throttle setting, and riding condition.

### ROUND SLIDE SINGLES ZHONGXING CARBURETOR STANDARD SPECIFICATIONS

CARB NO.	SIZE (MM)	MAIN JET (4/042)	PILOT JET (VM22/210)	NEEDLE JET (Series No.)	JET NEEDLE	THROTTLE VALVE (Part No.)	MAIN AIR JET (Part No.)	NEEDLE VALVE (Part No.)
VX18-144*	18	70	30	O-0 (145)	4F18	1.0 (VX18/158)	2.5 BODY	1.5 (VX15/172)
VX20-273*	20	180	22.5 (M28/1001)		4J13	2.0 (VX20/491)	0.5 (VX13/04)	1.5 (VX15/172)
VX22-133*	22	100	30	O-6N-8 N-6 (23#2)57(332)	4D20	2.0 (VX26/21)	2.5 BODY	2.0 (VX26/26)
VX24-512	24	210	40	N-8 (864)	5L14-4	1.5 (VX26/21)	0.8 (MD13/24)	2.0 (VX26/26)
VX26-606	26	190	22.5 (M28/1001)	O-0 (332)	5E75	1.5 (VX24/361)	0.5 (VX13/04)	2.5 (VX26/26)
VX26-8074	26	190	60	N-8 (169)	5F21	2.50 (VX28/56)	0.5 (BS30/97)	2.5 (VX26/26)
VX28-49	28	200	60	N-8 (169)	5F21	2.5 (VX28/56)	0.5 (BS30/97)	2.5 (VX26/26)
VX30-83	30	250	40	P-5 (159)	6F5	2.5 (VX34/110)	2.0 (BS30/97)	3.3 (VX34/39)
VX32-193*	32	200	35	Q-6 (159)	6DP17	3.0 (VX32/65)	2.0 (BS30/97)	3.3 (VX34/39)
VX32-33	32	200	35	Q-6 (159)	6DP17	3.0 (VX34/110)	2.0 (BS30/97)	3.3 (VX34/39)
VX34-168*	34	260	35	Q-2 (159)	6DH4	2.5 (VX34/110)	2.0 (BS30/97)	3.3 (VX34/39)
VX34-275*	34	260	35	Q-2 (159)	6DH4	2.5 (VX32/65)	2.0 (BS30/97)	3.3 (VX34/39)
VX36-4	36	310	35	Q-5 (159)	6FJ6	2.5 (VX36/36)	2.0 (BS30/97)	3.3 (VX34/39)
VX38-9	38	330	30	Q-2 (166)	6DP1	2.5 (VX38/24)	0.5 (BS30/97)	3.3 (VX34/39)
VX44-3	44	310	35	AA-5 (224)	7F7	2.5 (VX44/23)	0.5 (BS30/97)	3.3 (VX34/39)

#### \*NOTES:

- VX18-144, VM16-159, CLAMP ON TYPE
- VX20-273, YSR50 FLANGE TYPE
- VX22-133, FLANGE TYPE

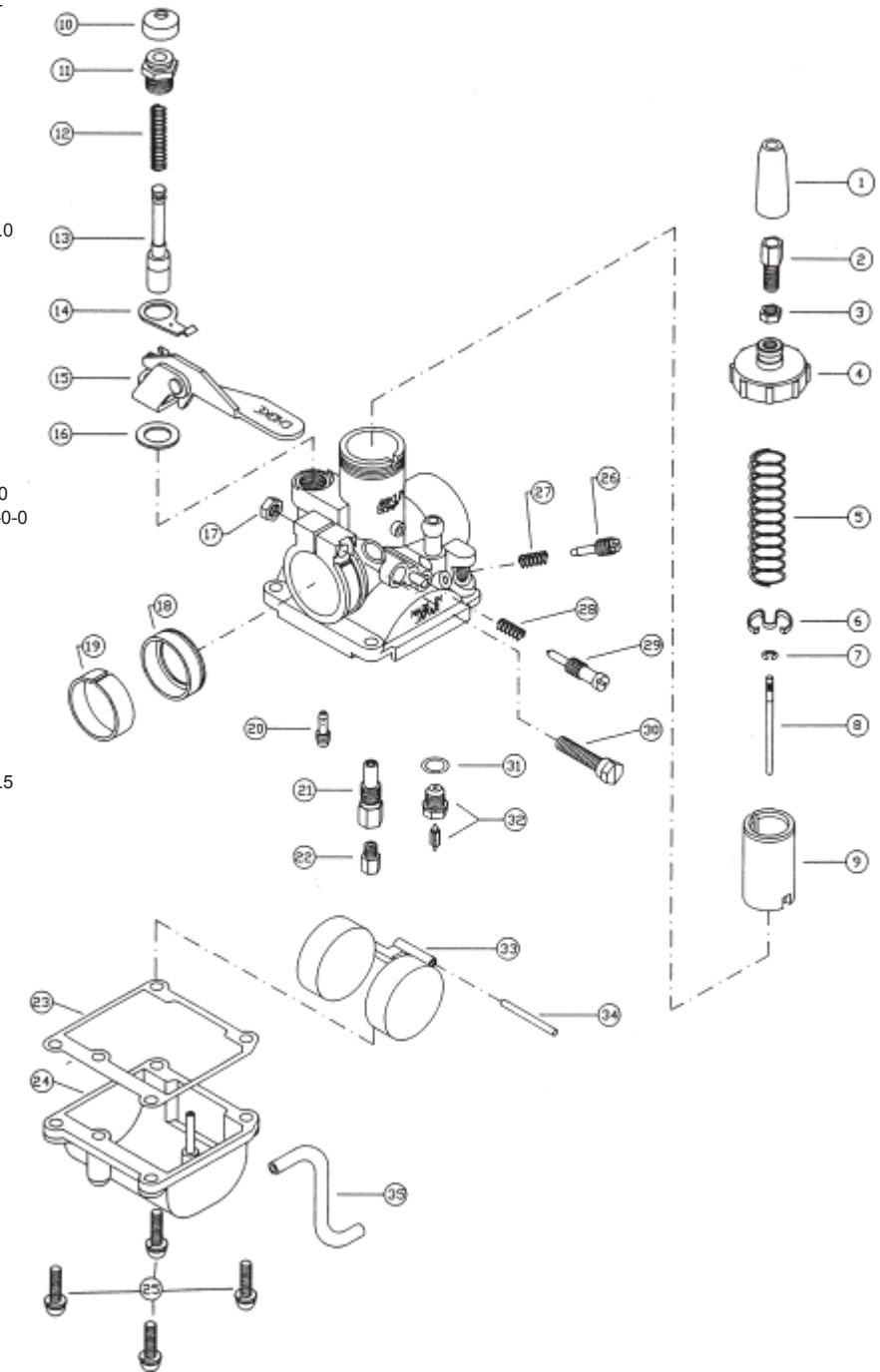
- VX32-193, RIGHT SIDE IDLE SCREW (MATCH TO VM32-33)
- All VX26 thru VM44mm, SPIGOT TYPE

- VX34-168, 11.5 MM. BELL, LG. FUEL INLET
- VX34-275, RIGHT SIDE IDLE SCREW (MATCH TO VM34-168)

# Parts

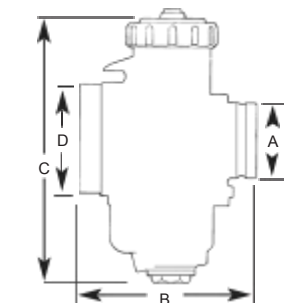
## VX18-144 Exploded View

- | No. | Description                    | Part Number   |
|-----|--------------------------------|---------------|
| 1.  | RUBBER CAP, THROTTLE CABLE     | VM18/67       |
| 2.  | CABLE ADJUSTER                 | M21/14        |
| 3.  | NUT, CABLE ADJUSTER            | B30/247       |
| 4.  | TOP, MIXING CHAMBER            | VM16/40       |
| 5.  | SPRING, THROTTLE VALVE         | VM18/170      |
| 6.  | CLIP, JET NEEDLE RETAINING     | VM18H1/38     |
| 7.  | E-RING, JET NEEDLE POSITIONING | VM20/369      |
| 8.  | JET NEEDLE                     | J8-4F18       |
| 9.  | THROTTLE VALVE (SLIDE)         | VM18/158-3.0  |
| 10. | RUBBER CAP, STARTER PLUNGER    | VM20/455      |
| 11. | FITTING, STARTER PLUNGER       | VM20/456      |
| 12. | SPRING, STARTER PLUNGER        | VM16/42       |
| 13. | STARTER PLUNGER                | VM18/144      |
| 14. | SPRING PLATE, STARTER LEVER    | VM18/151      |
| 15. | STARTER LEVER                  | VM18/215      |
| 16. | WASHER, STARTER LEVER          | BV26/118      |
| 17. | NUT, CLAMP BOLT                | N1=05         |
| 18. | SEALING RING, RUBBER           | VM18/326      |
| 19. | RING, INSULATOR                | VM18/327      |
| 20. | PILOT JET                      | VM22/210-30   |
| 21. | NEEDLE JET                     | VM15H1/17-0-0 |
| 22. | MAIN JET                       | 4/042-80      |
| 23. | GASKET, FLOAT BOWL             | VM17/161      |
| 24. | FLOAT BOWL                     | VM18/161      |
| 25. | SCREW, FLOAT BOWL              | CW2=0414      |
| 26. | AIR ADJUSTING SCREW            | VM20/305      |
| 27. | SPRING, AIR ADJUSTING SCREW    | VM15/112      |
| 28. | SPRING, IDLE ADJUSTING SCREW   | VM15/112      |
| 29. | IDLE ADJUSTING SCREW           | VM18/164      |
| 30. | BOLT, CLAMP                    | VM16/65       |
| 31. | WASHER, NEEDLE VALVE           | VM15/07       |
| 32. | NEEDLE VALVE & SEAT ASSY.      | VM15/172-1.5  |
| 33. | FLOAT                          | VM17/159      |
| 34. | PIN, FLOAT                     | BV26/22       |
| 35. | HOSE-OVERFLOW                  | VM13/06       |



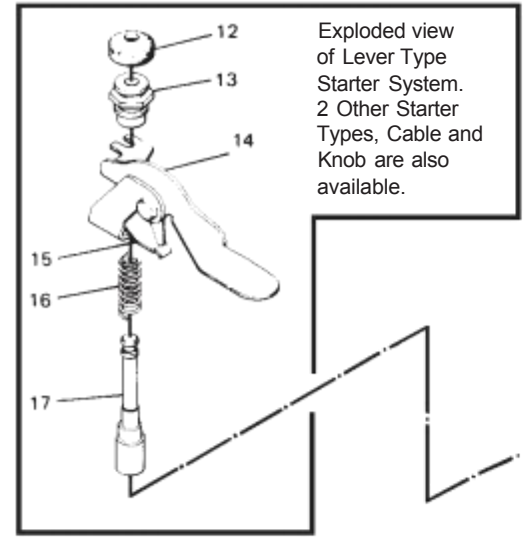
### VX SERIES ROUND SLIDE CARBURETOR DIMENSIONS (mm)

MODEL	VM18	VM20	VM22	VM24	VM26	VM28	VM30	VM32	VM34	VM36	VM38	VM44
A	CLAMP ON 22 ID	FLANGE 50.8 BOLT CTR	FLANGE 49 BOLT CTR	35	35	35		40		43		52
B	67	66	85	80	93	93	93	102	93		116	
C	108	115	114	116	122	120	137	142	137	152	154	193
D	32	43	43	43	44	44		58		62		70
TOTAL WIDTH	61	76.5	82	82	82	82		83		79		



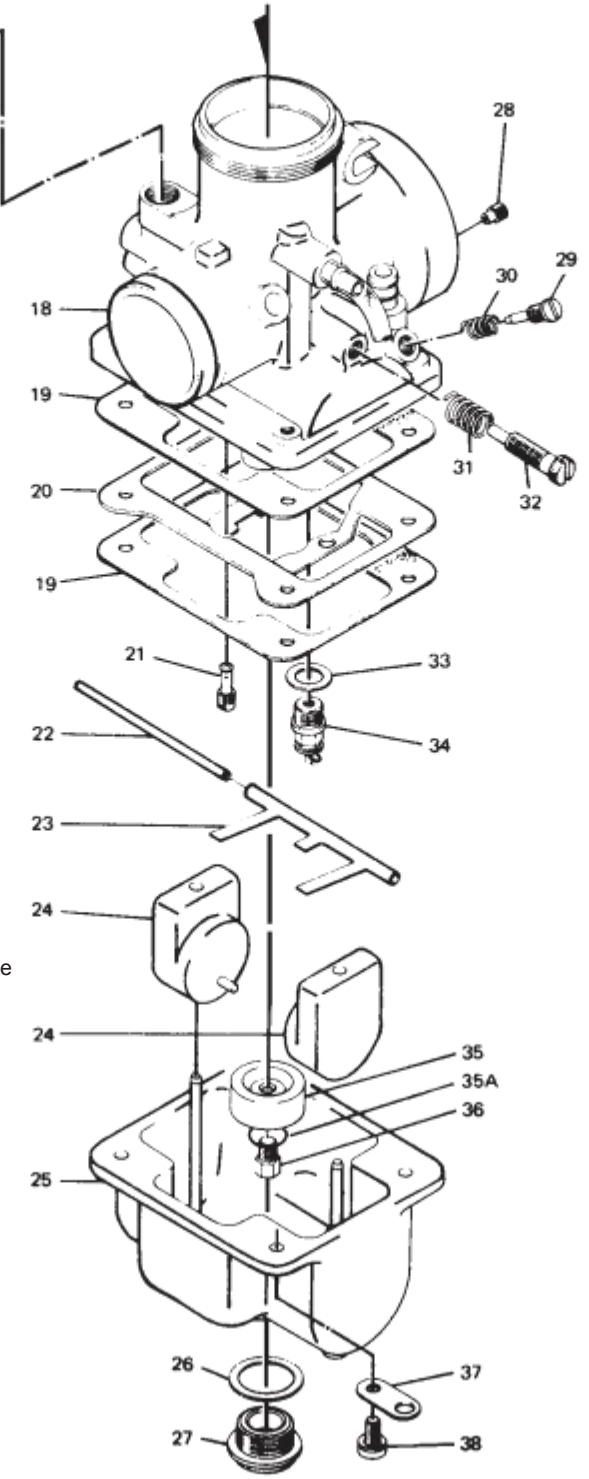
# VX Replacement

# Parts

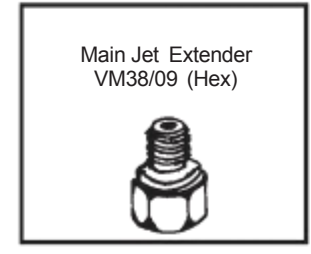
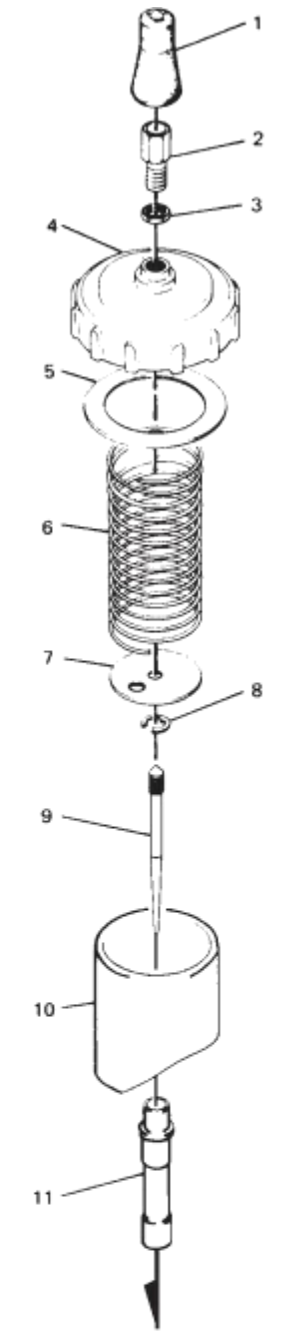


Exploded view of Lever Type Starter System. 2 Other Starter Types, Cable and Knob are also available.

## ZX VX Spigot Mount Carburetor Exploded View

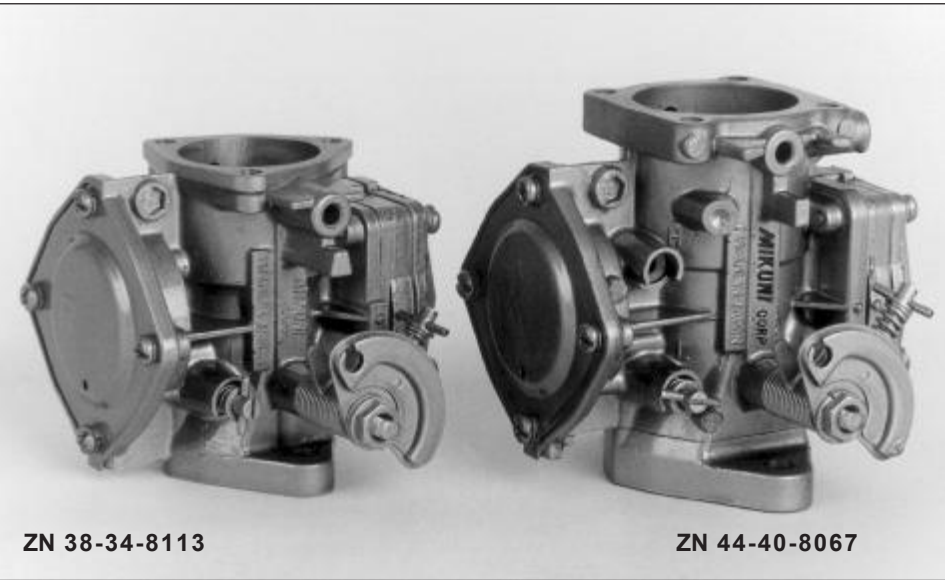


- VX26 Rebuild Kit Part No. NK-606**
- | Kit Parts | Description             |
|-----------|-------------------------|
| VX26/26   | Needle Valve Seat 2.5   |
| VX26/25   | Washer, Needle Valve    |
| VX20/492  | Bowl gasket             |
| BM042.64  | Drain Plug Gasket       |
| VX14/73   | Air Screw               |
| VX14.75   | O-Ring, Air Screw       |
| VX15/11   | Spring, Air Screw       |
| 603-16002 | Idle Screw              |
| BW32/04   | O-Ring, Idle Screw      |
| VX26/197  | Spring, Idle Screw      |
| VX20/369  | E-Clip, Jet Needle      |
| VX26/57   | Gasket, Top Cover       |
| VX26/46   | Rubber Cap, Cable Guide |
| CV2=0416  | Float Bowl Screws (4)   |



ITEM NUMBER and DESCRIPTION	VX26	VX28	VX30	VX32	VX34	VX36	VX38	VX40	VX44
1. RUBBER CAP, throttle cable				VX26/46					
2. CABLE ADJUSTER				M21/14					
3. LOCKNUT, cable adjuster				B30/247					
4. TOP, mixing chamber	VX26/56			VX34/27		VX36/09		VX44/05	
5. GASKET, mixing chamber top	VX26/57		VX34/50	VX34/29		VX36/06			
6. SPRING, throttle valve	VX28/257				VX34/31	VX34/55		VX44/13	
7. PLATE, spring seat	VX28/132				VX20/369	VX35/09		VX44/09	BS32/126
8. CLIP, needle positioning					#5 Series			#7 Series	
9. NEEDLE					VX28/56	VX36/36		VX40/02	
10. THROTTLE VALVE (SLIDE)					VX34/110	VX38/24			
11. NEEDLE JET					VX28/86(182)-VM30/38(169)	VX34/05 159	VX34/17(166)	VX44/10(224)	
12. RUBBER CAP, starter plunger					VX20/455				
13. FITTING, starter plunger	VX26/116					VX20/456			
14. LEVER, starter	VX28/135	VM28/497			VX28/124	VX32/53		VX36/58	
15. SPRING PLATE, starter level	VM26/09					VX32/17			
16. SPRING, starter plunger					VX16/42				
17. PLUNGER, starter						VX18/144			
18. BODY, mixing chamber									
19. GASKET, float bowl	VX28/129				VX 30/103 999-631-010	VX36/20		VX36/20	
20. BAFFLE PLATE, float bowl					VX34/72	VX36/40		VX44/12	
21. PILOT JET					VX22/210				
22. PIN, float arm hinge					BV26/22				
23. ARM, float	VX28/166				VX34/73			VX36/15	
24. FLOAT	VX28/164				VX34/61			VX24/236	
25. BOWL, float					VX34/68			VX36/07	VX44/04-80
26. WASHER, main jet plug	VX28/134				4/053			VX28/134	
27. DRAIN PLUG, float bowl	VX28/133				VX34/42	VX28/253	VX38/08	VX28/133	
28. AIR JET					BS30/97				
29. AIR ADJUSTING SCREW					VX20/214				
30. SPRING, air adjusting screw					M12F/46A				
31. SPRING, idle adjusting screw					M20/11				
32. IDLE ADJUSTING SCREW	VX24/224	VX28/142	VX24/224					VX22/171	VX24/224
33. WASHER, needle valve	VX26/25				B34/52 0.8, 1.0				
34. NEEDLE VALVE & SEAT ASSY.	VX26/26				VX34/39				or VX38/11-3.5
35. RING, main jet	VX26/228		VX36/17						VX28/228
36. MAIN JET					4/042				
37. PLATE, vent tube anchor	VX15/164				VX28/79				
38. SCREW, float bowl	CV2=0416		CV 2=0518			CV2=0516		CV2=0518	

# Super ZN Carbs



## SUPER ZN SERIES SQUARE PUMP TYPE

The high-performance Super ZN Carburetors are specifically designed for high-horsepower racing watercraft. These carburetors have been extensively tested to achieve greater air and fuel flow, providing maximum output. They feature special needle valves and springs for optimum pop-off, along with larger high and low speed jets. The Super ZN Series Carburetors include improved air fuel pump, externally adjustable metering screws,



ZN44-40-43

- **ZN34-28-8010** STANDARD 34mm Replacement
- **ZN38-34-8113** Single 38mm carburetor replacing most BN or Super BN carbs. Features: Viton 2.0 needle valve, extended throttle shaft for dual/triple applications, #65 slow jet, #107.5 main jet, no butterfly choke, primer fitting, owner's manual.
- **ZN44-40-8067** Single 44mm carburetor for sit-down models requiring larger jets. Features: Viton 2.5 needle valve, extended throttle shaft for dual/triple applications, #120 pilot jet, #140 main jet, no butterfly choke, primer fitting, owner's manual.



ZN44-40-8052

- **ZN44-40-43** Original equipment replacement for Yamaha Superjet. Features: Standard stock jetting, butterfly choke, 44mm main bore.
- **ZN44-40-8052** Performance single 44mm carb with extended throttle shaft for dual kits. Designed for maximum performance with a single carb and features: Viton 2.3 needle valve, #100 pilot jet, #125 main jet, primer type cold starter fitting (no butterfly choke), angled fuel fittings, instruction manual.

### Pro Racing Super ZN46 Series

Super BN46 Features a 48mm intake tapering to a 42mm venturi, controlled by a 46mm butterfly valve. Ready to race. Note: Bolt pattern same as BN44; some manifold porting may be necessary for maximum air flow.

- **ZN46-42-8002** Performance single 46mm carb with extended throttle shaft for dual kits. Designed for Pro Level Racing performance. Features: Viton 2.5 needle valve, #120 pilot jet, #150 main jet, primer type cold starter fitting (no butterfly choke), angled fuel fittings, owner's manual.



ZN46-42-8002

### Current ZN I Series Type Carburetors

- **ZN40I-38-24** Original equipment on the '98 SeaDoo GTI, GTS, GS. Features: 167.5 high-speed jet, 70 low-speed jet, 1.5 needle valve, 95g spring.
- **ZN40I-38-26** Original equipment on the '98 SeaDoo GSX, SPX - MAG.
- **ZN40I-38-27** Original equipment on the '98 SeaDoo GSX, SPX - PTO. Features: 140/142.5 high-speed jet, 67.5 low-speed jet, 1.5 needle valve, 95g spring.

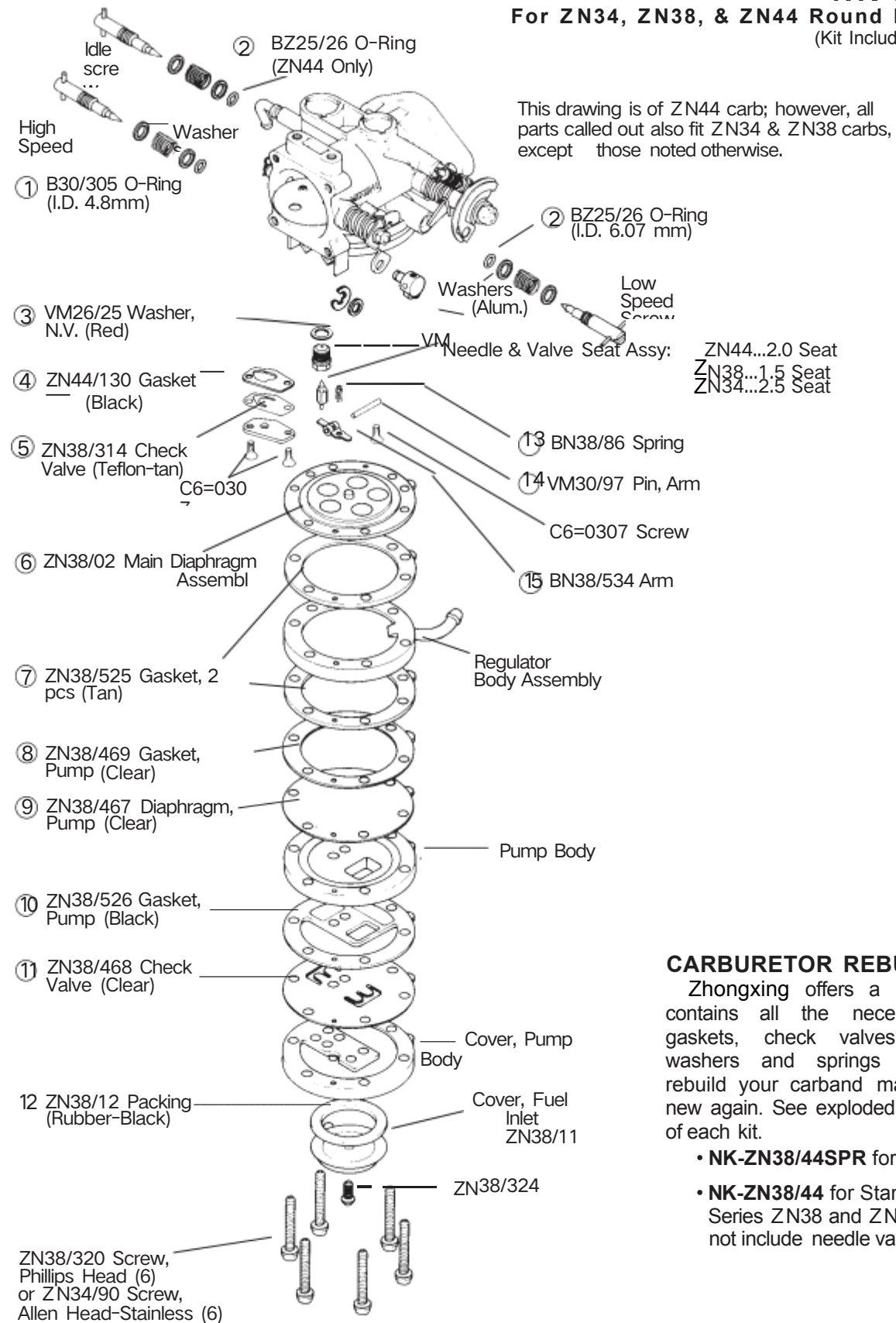


# ZN Rebuild Kits

# SZN/ZNI Parts

## ZN REBUILD KIT Round Pump Carb Type NK-ZN38/44

For ZN34, ZN38, & ZN44 Round Pump Styles  
(Kit Includes Circled Items 1-15)



### CARBURETOR REBUILD KITS

Zhongxing offers a rebuild kit that contains all the necessary O-rings, gaskets, check valves, diaphragms, washers and springs to completely rebuild your carb and make it run like new again. See exploded view for details of each kit.

• **NK-ZN38/44SPR** for Super ZN

• **NK-ZN38/44** for Standard ZN Series ZN38 and ZN44. (Does not include needle valve.)

## ZN REBUILD KIT Square Carb Type NK-ZN38/44 SPR

For SUPER ZN38, ZN44 and ZN46, ZN38I, ZN40I Square Pump Styles  
(Kit Includes Items 1-16 to Rebuild One Carb)

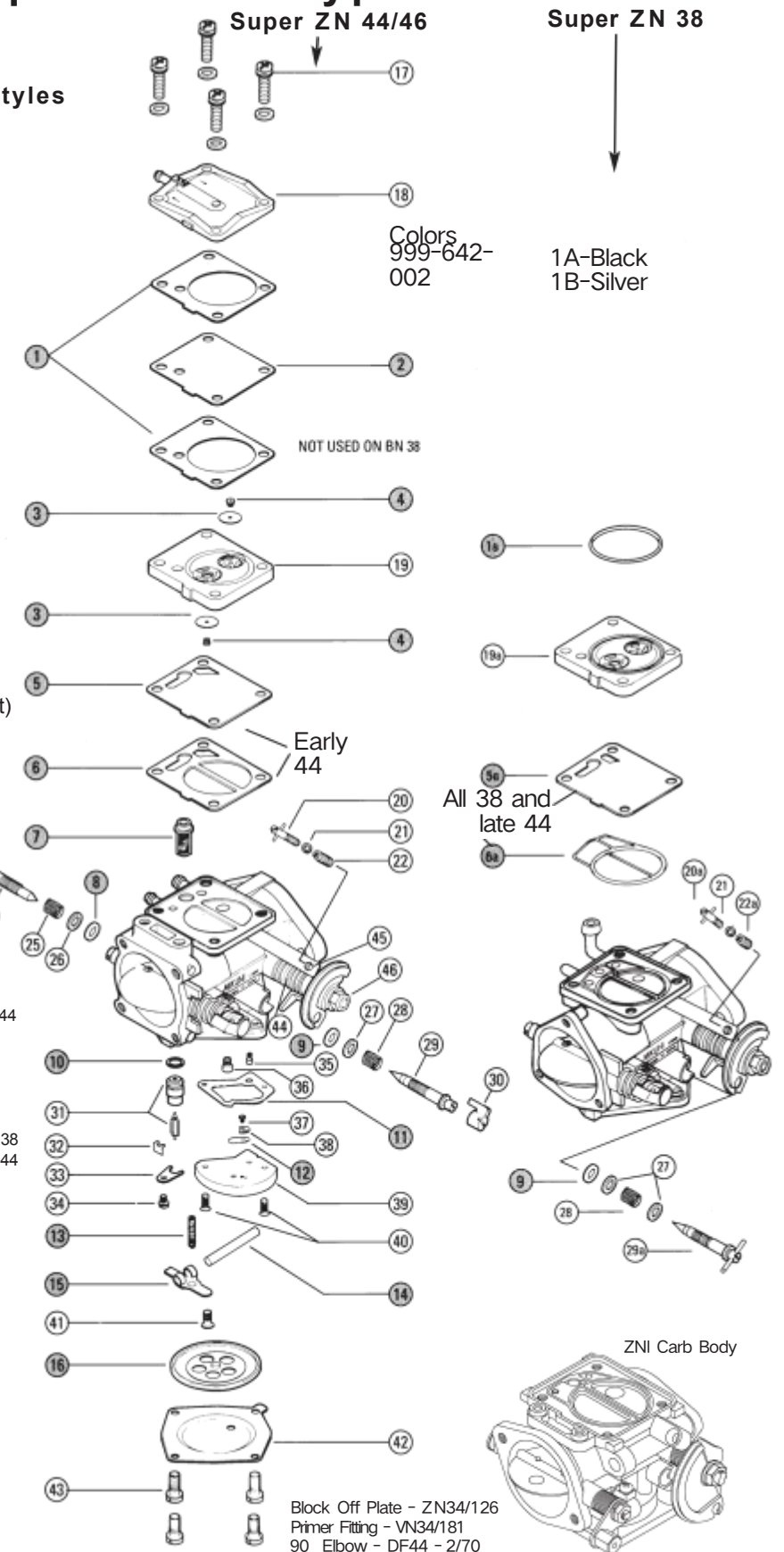
No.	Part No.	Description
1.	ZN38/547	Gasket, Pump (2)
1a.	617-72001	O-ring, Pump body
2.	ZN34/97	Diaphragm, Pump (Clear)
3.	ZN34/124	Check Valve (2) (Clear)
4.	ZN34/125	Grommet, Check Valve (2)
5.	ZN34/100**	Diaphragm, Damper
5a.	ZN34/129*	Diaphragm, Damper
6.	ZN34/101**	Gasket, Damper
6a.	617-92007*	O-Ring
7.	ZN44/146	Filter
8.	C30/305	O-Ring, Hi Speed
9.	ND12/16	O-Ring, Low Speed
10.	RV/10	O-Ring, Needle Valve
11.	ZN34/123	Gasket, Valve Body
12.	ZN34/107	Check Valve (Clear)
13.	731-03027	Spring, Arm (115 grams)
13a.	731-03030	Spring, Arm (65 grams)
13b.	731-03027T	Spring, Arm (95 grams)
14.	VR30/97	Pin, Arm
15.	ZN38/534	Arm (Stainless)
16.	ZN44/145	Diaphragm Assembly

### ZN PARTS

(Items 17-43 for Reference Only, Not Included in Kit)

17.	ZN34/120-30	Screw with 2 Washers, Stainless-30mm (4pcs.)
18.	ZN34/95	Cover, Pump
19.	ZN34/98** N/A	Body Assembly, Pump
19a.	ZN34/128*	Body Assembly, Pump
20.	ZN44/109**	Stop Screw, Idle
20a.	ZN34/82*	Stop Screw, Idle
21.	ZN38/39	Washer (Aluminum)
22.	ZN38/341**	Spring, Idle
22a.	ZN38/344*	Spring, Idle
23.	C26/03**	Cap
23a.	ZN44/118*	Cap with Tab
24.	704-25017	Adjuster, Hi Speed, 38/44
24a.	ZN 44/167	Adjuster, Hi Speed w/ Cross Bar, 38/44
25.	ZN38/344	Spring, Hi Speed
26.	ZN38/39	Washer, Hi Speed (Aluminum)
27.	ZN38/172	Washer, Low Speed (Aluminum)
28.	ZN38/343	Spring, Low Speed
29.	704-26008**	Adjuster, Low Speed, 44
29a.	ZN38/477*	Adjuster, Low Speed (with Cross Bar), 38
29b.	ZN38/166	Adjuster, Low Speed (with Cross Bar), 44
30.	ZN44/188	Cap
31.	886-35015-size	Needle Valve Assembly (Viton)
32.	VR15/285	Spring Clip, N.V.
33.	ZN34/117-GG	Plate, N.V. Retainer
34.	cv2-0307-G	Screw with Washer
35.	R100.606-size	Jet, Low Speed
36.	R102.221-size	Jet, High Speed
37.	ZV15/121-05-GG	Screw
38.	ZN34/108-GG	Plate, Valve
39.	ZN44/165	Valve Body Assembly
40.	D5-0414-G	Screw (2pcs)
41.	D6-0308-G	Screw
42.	ZN44/147	Cover (Stainless)
43.	NCWS-0512	Screw with Washer (4) (Stainless)
44.	ZN34/110	Spring
45.	ZN34/111	Bushing
46.	C40/55	Nut

Note: \*ZN38 & later ZN44 \*\*ZN44 only



# ZNI Rebuild Kits

## ZN 46 I CARB REBUILD KIT NK-ZN46I

No.	Part No.	Description
1.	ZN46I/13	Gasket, Pump
2.	ZN46I/14	Diaphragm, Pump (Clear)
3.	716-73002	O-Ring
4.	ZN46I/11	Check Valve (2)
5.	ZN34/125	Grommet (2)
6.	ZN46I/34	Diaphragm, Damper
7.	ZN46I/15	Diaphragm, Damper (Clear)
8.	716-73003	O-Ring
9.	ZN44/146	Filter, Fuel
10.	C30/305	O-Ring, Hi Speed (2)
11.	ND12/16	O-Ring, Low Speed
12.	RV/10	O-Ring, Needle Valve
13.	ZN34/123	Gasket, Valve Body
14.	ZN34/107	Check Valve (Clear)
15.	VR30/97	Pin, Arm
16.	830-03034	Spring, Arm 95 gram
17.	ZN38/534	Arm (Stainless)
18.	ZN44/145	Diaphragm assy., Main

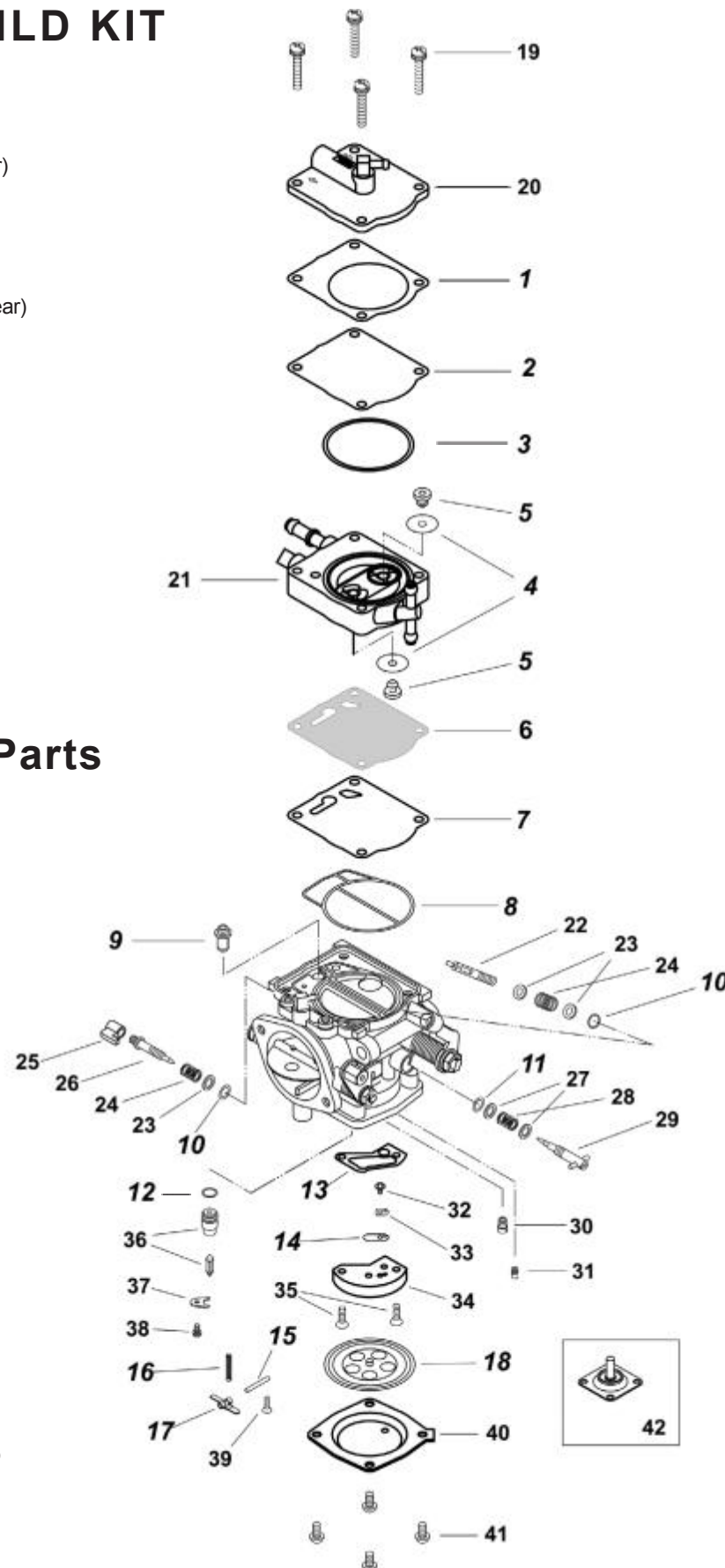
**NOTE:** Rebuild Kit contains parts 1 through 18

## ZN46 I Replacement Parts

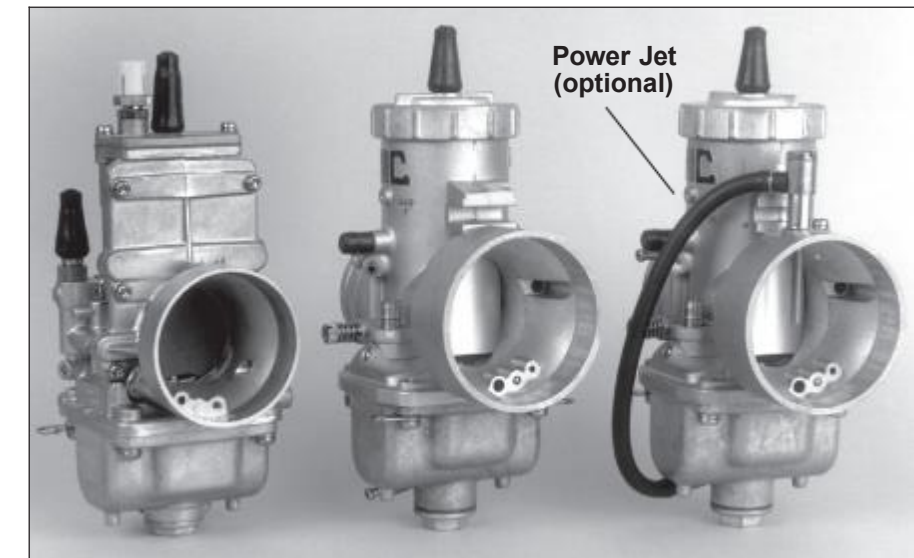
19.	ZN34/120-35	Screw w/ washers (4)**
20.	ZN46I/xx	Cover, Pump
21.	ZN46I/49	Body Assy., Pump
22.	ZN38I/40	Stop Screw, Idle
23.	ZN38/39	Washer, Aluminum (3)
24.	ZN38/344	Spring (2)
25.	998-904-006	Cap, Hi Speed Adjuster
26.	704-25017	Adjuster, Hi Speed
27.	ZN38/172	Washer, Aluminum (2)
28.	ZN38/343	Spring, Low Speed
29.	ZN38/477	Adjuster, Low Speed
30.	R102.221-size	Jet, Hi Speed
31.	R100.606-size	Jet, Low Speed
32.	BR15/121-05-GG	Screw
33.	BM34/108-GG	Plate, Valve
34.	BM44/165	Valve Body Assy.
35.	D5=0414-G	Screw (2)
36.	886-35018-size	Needle Valve Assy.
37.	ZN34/117-GG	Plate, Needle Valve rtnr
38.	CV2=0307-G	Screw w Washer
39.	D6=0308-G	Screw
40.	BR44/147	Cover (Stainless)
41.	D2S=0514	Screw (4)**
42.	ZN40I/22	Diaphragm, Acclr. Pump

**\*\*Tightening Torque:**

Part No. 19: 4.5 N/m (45 Kg/Cm)  
Part No. 41: 3.5 N/m (35 Kg/Cm)



# Snowmobile



## SNOWMOBILE CARBURETORS

ZHONGXING offers specially prepared carburetors designed to meet the unique demands of snowmobiles. Features are special throttle valve and needle valve designs better suited to colder, more dense air and constant throttle settings.

### SNOWMOBILE SINGLE CARBS

CARB NO.	SZ. MM.	MAIN JET (4/042)	PILOT JET (VM22/2/0)	NEEDLE JET (Series No.)	JET NEEDLE	THROTTLE VALVE (Part No.)	MAIN AIR JET (Part No.)	NEEDLE VALVE (Part No.)
VX30-164 STD	30	270	35	Q-O 159	6DH2	2.0	2.5 BODY	1.5
VX32-282	32	280	35	Q-O 159	6DH4	2.5	2.5 BODY	1.5
VX34-389	34	330	30	Q-O 159	6DH3	2.5	2.0 BS30/97	1.5
VX38-21	38	360	40	Q-O 166	6DH3	2.5 VM38/24	2.5 BODY	1.5 VM28/163
VX44-7	44	540	35	AA-5 224	7DH2	1.5 VM40/02 Aluminum	0.7 BS30/97	1.5 VM28/163
VX38-102 TS STYLE	38	340	25	Q-2 389	6FJ40	4.0 832-43011	2.5 BODY	1.5 832-43011
TS38-101 TSX STYLE	38	340	25	R-1 FIXED	6EJ12-57	4.0 999-832-014	2.5 BODY	1.8 786-36004-A

### RUBBER MOUNTING FLANGES

NOTE: Dimensions are millimeters.

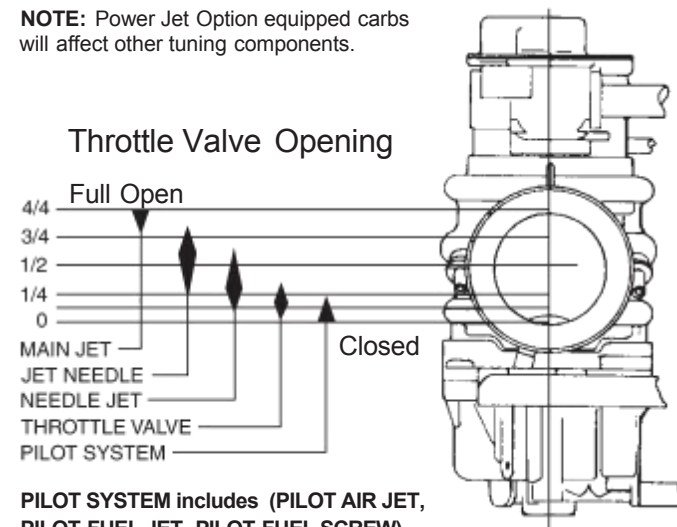
PART NUMBER	8.5 MM BOLT HOLE	CARB BORE SIZE	CARB SPIGOT DIAMETER	FLANGE THROAT DEPTH	TYPICAL CARB SIZE
M-VX28-200K	60	30	35	28	26-28
990-842-046	57	30	37	23	26-28
990-842-007	75	34	40	32	30-34
M-VX34-200K	60	36	40	25	30-34
M-VX36-200K	70	40	43	25	36-40
I-VX38-200-1	75	40	43	28	36-40
M-VX40-200K	75	46	52	32	40-44
I-VX44-200-1	84	46	52	26	40-44
HHS-004	70-75	40	43	28	36-40
ZX42/018-42K	70-75	42	45	25	42
ZX42/062-42K	70-75	42	45	25	42
ZX42/062-45K	70-75	45	48	25	45
ZX42/018-45K	70-75	45	48	25	45
ZX42/062-48K	70-78	48	51	25	48



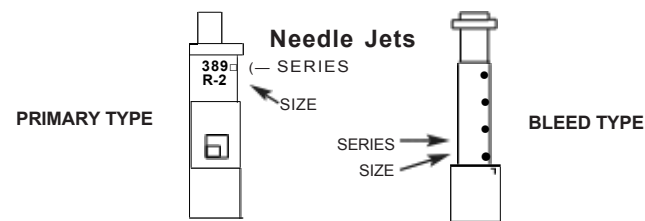
# TUNING/JETTING

## Functional Range Effectiveness of Tuning Parts in Relation to the Throttle Valve Opening (Approximation)

NOTE: Power Jet Option equipped carbs will affect other tuning components.



PILOT SYSTEM includes (PILOT AIR JET, PILOT FUEL JET, PILOT FUEL SCREW)



**PARTS STAMPING** This marking on a jetting part is your quality assurance guarantee it is a genuine Zhongxing component. **DO NOT ACCEPT**

## Pilot Jets

Description	Part No.	Size Range
VX, TS, TSX 	VX22/210 Fits VX, TS, TSX	10 - 60 (Increments of 2.5) 60 - 110 (Increment 5) 100 - 140 (Increment 10)
RX, ZXR 	VX28/486 Fits RX, ZX	10 - 70 (Increment 2.5)
OEM, TSX, BSR Rhino 	N224.103 For CR, RM, YZ, KX	10 - 70 (Increment 2.5)
OEM 	N151.067 Non-Bleed, OEM Applications	30 - 60 (Increment 2.5)
Bleed Type 	BS30/96	30 - 60 (Increments of 2.5)
B-Type Butterfly Carb 	N101.043	30 - 100 (Increments of 2.5) 105 - 160 (Increments of 5)
Super ZN 	N100.606 Low Speed Jet for SBN	30 - 160 (Increment 2.5)
OEM Carbs, Banshee 	M28/1001 Banshee OEM Applications	15 - 70 (Increment 2.5)

## Main Jets

Description	Part No.	Size Range
Large Hex 	4/042 (Fits VX, TS)	50 - 250 (Increments of 5) 250 - 250 (Increment 10) 500 - 640 (Increment 20) 650, 660, 680, 700, 710, 720
Small Hex 	M10/14	40 - 200 (Increment 5)
Large Round 	N100.604 (Fits RS and HS)	50 - 200 (Increment 2.5) 200 - 215 (Increment 5) 215 - 240 (Increment 10)
Small Round 	N102.221 (Fits SBN)	30 - 190 (Increment 2.5) 190 - 220 (Increment 5) 230, 240, 250
Press - In 	N208.099 Press-In OEM Application	110 - 180 (Increments of 2.5) Needs O-Ring #616-12001
Large Thread 	VX11/22	50 - 180 (Increments of 5)

## Air Jets

	<b>BS30/97</b> For Most ZH's .5 thru 2.0 Increments of .1
--	--

## Starter Jets

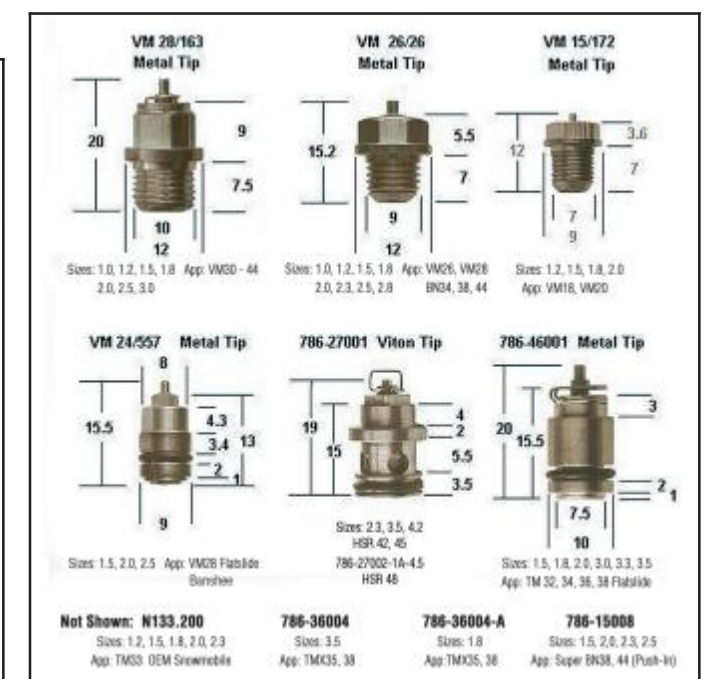
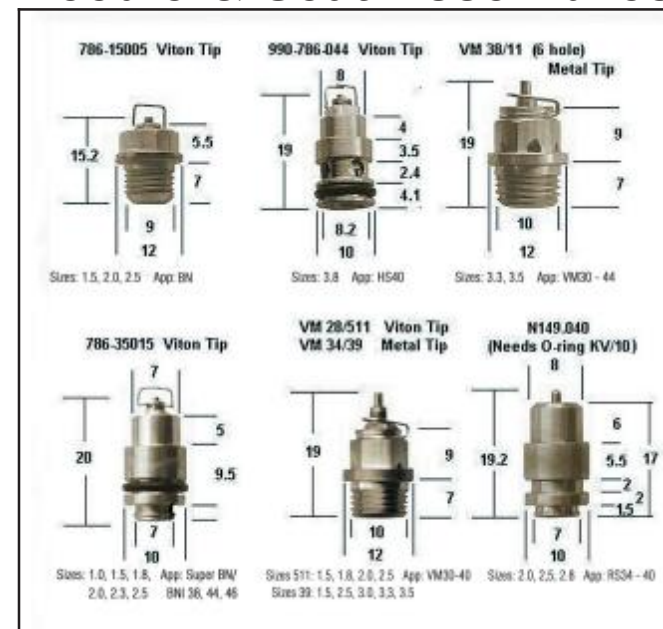
	<b>VX 17/1002</b> Controls enricher on TS carburetors 20 thru 120 and 1.0, 1.5, 2.0
--	--

# Components

## Needle Jets

Carburetor	Part No.	Series	leaner	Available Needle Jet Sizes	richer
VX30 - VX36 Round Slide	VM34/05 (990-793-004 from P-0 up)	159		N-0, 4, 6, 8; O-0, 2, 4, 5, 6, 8; P-0, 2, 4, 5, 6, 8; Q-0, 2, 4, 5, 6, 8; R-0, 2, 4, 5, 6, 8.	
VX38 Round Slide	VM34/17 (990-793-003 from P-0 up)	166		N-6, 8; O-0, 2, 4, 5, 6, 8; P-0, 2, 4, 5, 6, 8; Q-0, 2, 4, 5, 6, 8; R-0, 2, 4, 5, 6, 8.	
VX28 - VM30 Small Body	VM30/38	169		N-0, 4, 6, 8; O-0, 2, 4, 5, 6, 8; Q-0, 2, 4, 5, 6, 8.	
VX28 Round Slide TM28 Flat Slide	VM30/46	175		O-0, 2, 4, 5, 6, 8; P-0, 2, 4, 5, 6, 8.	
VX30 - VM36 Round Slide Body	VM32/19	176		O-2, 4, 5, 6; P-2, 4, 5, 6, 8.	
VX26 Round Slide Body	VM28/86	182		N-6; O-0, 2, 4, 5, 6, 8; P-0, 2.	
VX40 - VM44 Round Slide Body	VM44/10	224		Z-0, 2, 4, 6, 8, 9; AA-0, 1, 2, 4, 5, 6, 8, 9; BB-0, 2, 3, 5, 9; CC-0, 5, 9.	
Yamaha OEM	VM38/41	247		O-0, 2, 4, 6, 8; P-2, 4, 5, 6, 8; Q-0, 2, 4, 5, 6, 8; R-0, 2, 4, 6, 8.	
TS32 - TS38 Flat Slide Body	785-24001	389		O-0, 2, 4, 6, 8; P-2, 4, 5, 6, 8; Q-0, 2, 4, 6, 8; R-0, 2, 4, 6, 8.	
VX38 (Same 166 OEM) OEM Round Slide	785-23005	480		N-6, 8; O-0, 2, 4, 5, 6, 8, 9; P-0, 1, 2, 4, 5, 6, 7, 8, 9; Q-0, 2, 4, 5, 6, 8; R-0, 1, 2, 4, 5, 6, 8.	
RX34 - RX40 HS40 - TM36	784-13002	568		Q-6, 8; P-0, 2, 4, 5, 6, 8; Y-0, 2, 4, 5, 6, 8; Z-0, 2, 4, 5, 6; BB-0.	
TMX OEM Series Flat Slide Body	784-13005	633		S-4, 6, 7, 8; T-0.	
TM33 Flat Slide Body	784-241111	640		P-4, 6, 8; Q-0, 2.	
ZXR42-48 Roller Flat Slide	784-430000	723		Y-2, 4, 6, 8; Z-0.	
TSX-X OEM Series	784-410002	914		S-2, 4, 7, 8, 9; T-0.	
TS24 Flat Slide	784-21005	454		P-8, Q-0, Q-8.	

## Needle & Seat Assemblies





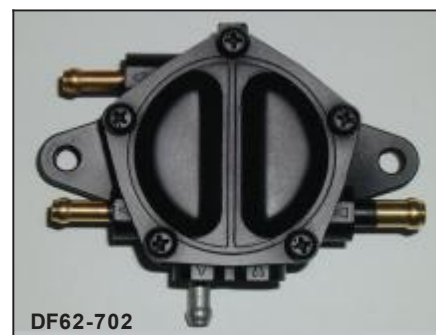
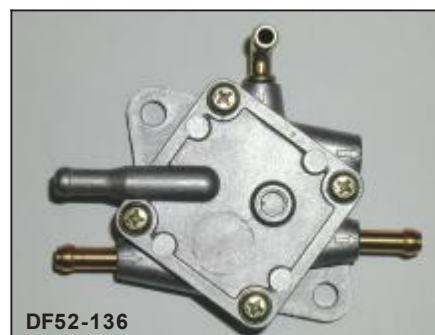
# Fuel Pumps

## PULSE FUEL PUMPS

Zhongxing Pulse Fuel Pumps employ an engine's fluctuating engine crankcase pressure to pump fuel from a remote fuel tank to an engine's carburetor(s). Applications include personal watercraft and snowmobiles.



Part Number	Number of Outlets	Style	Mounting	Flow Rate LITERS/HR
DF44-227	1	RECTANGLE	FLUSH	14
DF52-176	2	ROUND	BRACKET	35
DF52-73	2	ROUND	FLUSH	35
DF52-92	3	ROUND	FLUSH	35
DF52-136	2	SQUARE	FLUSH	31
DF62-702	2	PENTAGON	FLUSH	65



PART NUMBER	CONTENTS	DESCRIPTION	QUANTITY	REMARKS
MK-DD44	CW2=0416	SCREW	4	W/WASHER
	DF44-201/03	GASKET	1	FIBER
	DF44-201/04	DIAPHRAGM	1	CLEAR
	DF44-201/05	MEMBRANE	1	THIN RUBBER
MK-DD52 (Except DF52-136)	DF52/105	GASKET	1	THICK FIBER
	DF52-48/10	DIAPHRAGM	2	TRANSPARENT FILM
	DF52-48/05	GASKET	1	THIN RUBBER
	DF52/113	GASKET	1	THIN RUBBER
	DF52/36A	GASKET	1	THICK FIBER
	DF52/27A	VALVE	2	CLEAR
MK-DD62	DF44/26	GROMMET	2	BLACK
	DF62-601/03	GASKET	2	PAPER GASKET
	DF62-601/04	DIAPHRAGM	2	CLEAR
	DF62-701/03	GASKET	2	PAPER GASKET
MK-DD52-531	DF62-701/05	CHECK VALVE	2	CLEAR GROMMET
	Yamaha Rhino Fuel Pump Rebuild Kit		1	

# Rebuild Kits



## Zhongxing DF52 ABS Plastic Pulse Fuel Pumps for OEM and Custom Applications

These are the new Zhongxing DF52 Plastic Pulse Fuel Pumps, providing a fuel flow rate up to 17 liters per hour.

- H2DF52-708-1 Pulse Black Plastic Fuel Pump features a Brass bushing in the mounting holes.
- DF52-745 Pulse Black Plastic Fuel Pump does not have mounting hole bushings.



## Rebuild Kits for Zhongxing Aftermarket & OEM ZN Watercraft Carburetors, DF Fuel Pump

Zhongxing Genuine Carburetor and Fuel Pump Rebuild Kits are available for both Mikuni Aftermarket Products as well as Mikuni Original Equipment Manufacturers' (OEM) Carburetors and Fuel Pumps. All Rebuild Kits feature Genuine Zhongxing Replacement Parts suggested for the rebuild, along with a Parts List and Exploded View Diagram to help with assembly. Because different vehicles require different jetting,

### Zhongxing MK-ZN-38/44 Carburetor Rebuild Kit for Zhongxing ZN 34, 38, 44mm Personal Watercraft Carburetors Including for Kawasaki Jet Ski models

JS300 with ZN34 Carburetor  
JS400 with ZN36 Carburetor  
JS550 with ZN38 Carburetor  
JS550 with ZN44 Carburetor

### Zhongxing MK-BN38/44 SPR Super ZN Carburetor Rebuild Kit for Super ZN38 and ZN44 Personal Watercraft Carburetors

for Zhongxing Super ZN38 and Super ZN 44 Carburetors as also found on Yamaha with Super ZN44 and Sea-Doo with Super ZN38

### ZX MK-BN46-I BN Carburetor Rebuild Kit for ZX BN46-I Carburetor for Personal Watercraft

Zhongxing Rebuild Kit for ZN46-I (ZN46-i) Carburetors with Pulse Fuel Pumps used in many personal watercraft applications.

ZX Carburetor Rebuild Kits DO NOT include jetting components. In older vehicles with a lot of wear, or those that have been stored with old gasoline, you may need to replace worn or clogged Needle Jets, Main Jets, Pilot Jets and Air Jets. You will need to order any required jetting components separately, additional to the ZX Rebuild Kit. These jetting components are shown in this ZX Product Catalog and on Zhongxingglobal.com.

### ZX MK-ZN44I-YAM ZN Carburetor Rebuild Kit for Yamaha GP Personal Watercraft

ZX Rebuild Kit for ZN44I (ZN44i-Yam) Carburetors with Pulse Fuel Pumps for Yamaha GP Personal Watercraft Carburetor.

### ZX MK-DF44 Fuel Pump Rebuild Kit for ZX Square Body Pulse Fuel Pump

ZX Fuel Pump Rebuild Kit for Pulse Fuel Pump DF44-211. Also for Arctic Cat Fuel Pump #0115-481

### ZX MK-DF52 Fuel Pump Rebuild Kit for ZX Round Pulse Fuel Pump

for ZX DF52-21, FD52-73, DF52-92

### ZX MK-DF62 Fuel Pump Rebuild Kit for ZX Pentagon Pulse Fuel Pump

for ZX DF62-702, DF62-705, DF62-706 Arctic Cat Fuel Pump #0670-452

